

## Product datasheet for PH302398

### GOLPH3L (NM\_018178) Human Mass Spec Standard

#### Product data:

Product Type:	Mass Spec Standards
Description:	GOLPH3L MS Standard C13 and N15-labeled recombinant protein (NP_060648)
Species:	Human
Expression Host:	HEK293
Expression cDNA Clone or AA Sequence:	RC202398
Predicted MW:	32.8 kDa
Protein Sequence:	>RC202398 protein sequence Red=Cloning site Green=Tags(s)  MTLTLHRARRTEISKNSEKKMESEEDSNWEKSPDNEDSGDSKDIRLTLMEEVLLLGLKDKEGYTSFWNDC ISSGLRGGILIELAMRGRIYLEPPTMRKKRLDRKVLLKSDSPTGDVLLDET LKH IKATEPTETVQTWIE LLTGETWNPFKLQYQLRNV RERIAKNLVEKGILTTEKQNFLLFDMTTHPV TNTTEKQRLVKKLQDSVLER WVNDPQRMDKRTLALLVLAHSSDVLENV FSSLTDDKYDVAMNRAKDLVELDPEVEGT KPSATEMIWAVLA AFNKS  TRTRPLEQKLI SEEDLAANDILDYKDDDDKV
Tag:	C-Myc/DDK
Purity:	> 80% as determined by SDS-PAGE and Coomassie blue staining
Concentration:	>0.05 µg/µL as determined by microplate BCA method
Labeling Method:	Labeled with [U- <sup>13</sup> C <sub>6</sub> , <sup>15</sup> N <sub>4</sub> ]-L-Arginine and [U- <sup>13</sup> C <sub>6</sub> , <sup>15</sup> N <sub>2</sub> ]-L-Lysine
Buffer:	25 mM Tris-HCl, 100 mM glycine, pH 7.3
Storage:	Store at -80°C. Avoid repeated freeze-thaw cycles.
Stability:	Stable for 3 months from receipt of products under proper storage and handling conditions.
RefSeq:	<a href="#">NP_060648</a>
RefSeq Size:	3208
RefSeq ORF:	855
Synonyms:	GPP34R
Locus ID:	55204



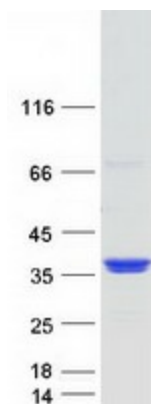
[View online »](#)

UniProt ID: [Q9H4A5](#)

Cytogenetics: 1q21.3

Summary: The Golgi complex plays a key role in the sorting and modification of proteins exported from the endoplasmic reticulum. The protein encoded by this gene is localized at the Golgi stack and may have a regulatory role in Golgi trafficking. [provided by RefSeq, Jul 2008]

### Product images:



Coomassie blue staining of purified GOLPH3L protein (Cat# [TP302398]). The protein was produced from HEK293T cells transfected with GOLPH3L cDNA clone (Cat# [RC202398]) using MegaTran 2.0 (Cat# [TT210002]).