

Product datasheet for PH302395

CSTP1 (CPPED1) (NM_018340) Human Mass Spec Standard

Product data:

Product Type:	Mass Spec Standards
Description:	CPPED1 MS Standard C13 and N15-labeled recombinant protein (NP_060810)
Species:	Human
Expression Host:	HEK293
Expression cDNA Clone or AA Sequence:	RC202395
Predicted MW:	35.6 kDa
Protein Sequence:	>RC202395 protein sequence Red=Cloning site Green=Tags(s) MSAAEAGGVFHRARGRTLDAFPAEKESEWKGPFFYILGADPQFGLIKAWSTGDCDNGGDEWEQEIRLTEQ AVQAINKLNPKPKFFVLCGDLIHAMPGKPWRTEQTEDLKRVLRAVDRAIPLVLVSGNHDIGNTPTAETVE EFCRTWGGDDYFSFWVGGVFLVLNSQFYENPSKCPSLKQAQDQWLDEQLSIARQRHCQHAIVFQHIPLFL ESIDEDDDYYFNLSKSTRKKLADKFIHAGVRVVFSGHYHRNAGGTYQNLDMVSSAIGCQLGRDPHGLRV VVVTAEKIVHRYSLDELSEKGIEDDLMDLIKKK SGPTRTRPLEQKLI SEEDLAANDILDYKDDDDKV
Tag:	C-Myc/DDK
Purity:	> 80% as determined by SDS-PAGE and Coomassie blue staining
Concentration:	>0.05 µg/µL as determined by microplate BCA method
Labeling Method:	Labeled with [U- ¹³ C ₆ , ¹⁵ N ₄]-L-Arginine and [U- ¹³ C ₆ , ¹⁵ N ₂]-L-Lysine
Buffer:	25 mM Tris-HCl, 100 mM glycine, pH 7.3
Storage:	Store at -80°C. Avoid repeated freeze-thaw cycles.
Stability:	Stable for 3 months from receipt of products under proper storage and handling conditions.
RefSeq:	<u>NP_060810</u>
RefSeq Size:	6156
RefSeq ORF:	942
Synonyms:	CSTP1
Locus ID:	55313



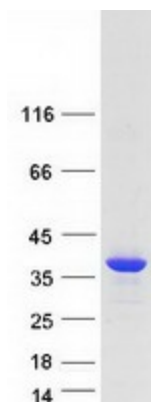
[View online »](#)

UniProt ID: [Q9BRF8](#)

Cytogenetics: 16p13.12

Summary: Protein phosphatase that dephosphorylates AKT family kinase specifically at 'Ser-473', blocking cell cycle progression and promoting cell apoptosis. May play an inhibitory role in glucose uptake by adipocytes.[UniProtKB/Swiss-Prot Function]

Product images:



Coomassie blue staining of purified CPPED1 protein (Cat# [TP302395]). The protein was produced from HEK293T cells transfected with CPPED1 cDNA clone (Cat# [RC202395]) using MegaTran 2.0 (Cat# [TT210002]).