

## Product datasheet for PH302393

### ABHD10 (NM\_018394) Human Mass Spec Standard

#### Product data:

Product Type:	Mass Spec Standards
Description:	ABHD10 MS Standard C13 and N15-labeled recombinant protein (NP_060864)
Species:	Human
Expression Host:	HEK293
Expression cDNA Clone or AA Sequence:	RC202393
Predicted MW:	33.9 kDa
Protein Sequence:	>RC202393 protein sequence <b>Red</b> =Cloning site <b>Green</b> =Tags(s)  MAVARLAAVAAWVPCRSWGWAAVPFGPHRGLSVLLARIPQRAPRWLPACRQKTSLSFLNRPDLPNLAYKK LKGKSPGIIFIPGYLSYMGTKALAIIEEFCKSLGHACIRFDYSGVSSDGNSEESTLGKWRKDVLSIIDD LADGPQILVGSSLGGWMLHAAIARPEKVVALIGVATAADTLVTKFNQLPVELKKEVEMKGVSMPSKYS EEGVYNVQYSFIKEAEHHCLLHSPIPVNCPIRLLHGMKDDIVPWHTSMQVADRVLSTDVDVILRKHSDHR MREKADIQLLVYTIDDLIDKLSTIVN  <b>TRTRPLEQKLISEEDLAANDILDYKDDDDKV</b>
Tag:	C-Myc/DDK
Purity:	> 80% as determined by SDS-PAGE and Coomassie blue staining
Concentration:	>0.05 µg/µL as determined by microplate BCA method
Labeling Method:	Labeled with [U- <sup>13</sup> C <sub>6</sub> , <sup>15</sup> N <sub>4</sub> ]-L-Arginine and [U- <sup>13</sup> C <sub>6</sub> , <sup>15</sup> N <sub>2</sub> ]-L-Lysine
Buffer:	25 mM Tris-HCl, 100 mM glycine, pH 7.3
Storage:	Store at -80°C. Avoid repeated freeze-thaw cycles.
Stability:	Stable for 3 months from receipt of products under proper storage and handling conditions.
RefSeq:	<a href="#">NP_060864</a>
RefSeq Size:	2771
RefSeq ORF:	918
Locus ID:	55347
UniProt ID:	<a href="#">Q9NUJ1</a>

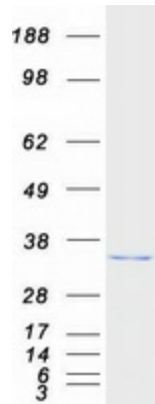


[View online »](#)

Cytogenetics: 3q13.2

**Summary:** This gene encodes a mitochondrially-localized enzyme that acts in liver cells as a hydrolase. The encoded protein removes glucuronide from mycophenolic acid acyl-glucuronide. There is a pseudogene for this gene on chromosome 6. Alternative splicing results in multiple transcript variants. [provided by RefSeq, Jan 2013]

**Product images:**



Coomassie blue staining of purified ABHD10 protein (Cat# [TP302393]). The protein was produced from HEK293T cells transfected with ABHD10 cDNA clone (Cat# [RC202393]) using MegaTran 2.0 (Cat# [TT210002]).