

Product datasheet for PH302381

SEPTIN10 (NM_144710) Human Mass Spec Standard

Product data:

Product Type:	Mass Spec Standards
Description:	SEPT10 MS Standard C13 and N15-labeled recombinant protein (NP_653311)
Species:	Human
Expression Host:	HEK293
Expression cDNA Clone or AA Sequence:	RC202381
Predicted MW:	52.6 kDa
Protein Sequence:	>RC202381 protein sequence Red=Cloning site Green=Tags(s)

MASSEVARHLLFQSHMATKTTTCMSSQGSDDDEQIKRENIRSLTMSGHVGFEFSLPDQLVNRSIQQGFCFNIL
CVGETGIGKSTLIDTLFNTNFEDYESSHFCPNVKLKAQTYELQESNVQLKLTIVNTVGFQDQINKEESYQ
PIVDYIDAQFEAYLQEELKIKRSLFTYHDSRIHVCLYFISPTGHSLKTLDLLTMKNLDSKVNIIPIVIAKA
DTVSKTELQKFKIKLMSELVSNQVQIYQFPTDDDTIAKVNAAMNGQLPFAVVGSMDEVKVGKMKVQARQY
PWGVVQVENENHCDFVKLREMLICTNMDLREQTHTRHYELYRRCKLEEMGFTDVGPEKPVSVQETIEA
KRHEFHGERQRKEEEMKQMFVQRVKEKEAILKEAERELQAKFEHLKRLHQEERMKLEEKRRLLLEEIIAF
SKKKATSEIFHSQSFLATGSNLRKDKDRKNSNFL

TRTRPLEQKLISEEDLAANDILDYKDDDDKV

Tag:	C-Myc/DDK
Purity:	> 80% as determined by SDS-PAGE and Coomassie blue staining
Concentration:	>0.05 µg/µL as determined by microplate BCA method
Labeling Method:	Labeled with [U- ¹³ C ₆ , ¹⁵ N ₄]-L-Arginine and [U- ¹³ C ₆ , ¹⁵ N ₂]-L-Lysine
Buffer:	25 mM Tris-HCl, 100 mM glycine, pH 7.3
Storage:	Store at -80°C. Avoid repeated freeze-thaw cycles.
Stability:	Stable for 3 months from receipt of products under proper storage and handling conditions.
RefSeq:	<u>NP_653311</u>
RefSeq Size:	3256
RefSeq ORF:	1362
Synonyms:	SEPT10



[View online »](#)

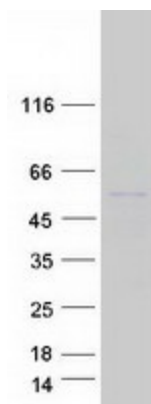
Locus ID: 151011

UniProt ID: [Q9P0V9](#), [Q59H84](#)

Cytogenetics: 2q13

Summary: This gene encodes a member of the septin family of cytoskeletal proteins with GTPase activity. This protein localizes to the cytoplasm and nucleus and displays GTP-binding and GTPase activity. A pseudogene for this gene is located on chromosome 8. Alternative splicing results in multiple transcript variants. [provided by RefSeq, Apr 2012]

Product images:



Coomassie blue staining of purified SEPTIN10 protein (Cat# [TP302381]). The protein was produced from HEK293T cells transfected with SEPTIN10 cDNA clone (Cat# [RC202381]) using MegaTran 2.0 (Cat# [TT210002]).