

Product datasheet for PH302377

ITM2B (NM_021999) Human Mass Spec Standard

Product data:

Product Type:	Mass Spec Standards
Description:	ITM2B MS Standard C13 and N15-labeled recombinant protein (NP_068839)
Species:	Human
Expression Host:	HEK293
Expression cDNA Clone or AA Sequence:	RC202377
Predicted MW:	30.4 kDa
Protein Sequence:	>RC202377 protein sequence Red=Cloning site Green=Tags(s) MVKVTFNSALAQKETKKDEPKSGEEAL IIPDAVAVDCKDPDDVVPVQRRRAWCMCFGLAFMLAGVIL GGAYLYKYFALQPDDVYYCGIKYIKDDVILNEPSADAPAALYQTIENIKIFEEEEVEFISVPVPEFADS DPANIVHDFNKKLTAYLDLNLDKCYVIPLNTSIVMPRNLELLINIKAGTYLPQSYLIHEHMVITDRIE NIDHLGFFIYRLCHKETYKLRRETIGIQKREASNCFAIRHFENKFAVETLICS TRTRPLEQKLI SEEDLAANDILDYKDDDDKV
Tag:	C-Myc/DDK
Purity:	> 80% as determined by SDS-PAGE and Coomassie blue staining
Concentration:	>0.05 µg/µL as determined by microplate BCA method
Labeling Method:	Labeled with [U- ¹³ C ₆ , ¹⁵ N ₄]-L-Arginine and [U- ¹³ C ₆ , ¹⁵ N ₂]-L-Lysine
Buffer:	25 mM Tris-HCl, 100 mM glycine, pH 7.3
Storage:	Store at -80°C. Avoid repeated freeze-thaw cycles.
Stability:	Stable for 3 months from receipt of products under proper storage and handling conditions.
RefSeq:	NP_068839
RefSeq Size:	1896
RefSeq ORF:	798
Synonyms:	ABRI; BRI; BRI2; BRICD2B; E3-16; E25B; FBD; imBRI2; RDGCA
Locus ID:	9445
UniProt ID:	Q9Y287 , A0A384MDP7



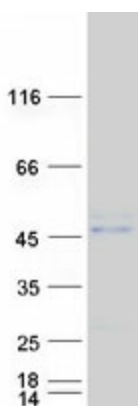
[View online »](#)

Cytogenetics: 13q14.2

Summary: Amyloid precursor proteins are processed by beta-secretase and gamma-secretase to produce beta-amyloid peptides which form the characteristic plaques of Alzheimer disease. This gene encodes a transmembrane protein which is processed at the C-terminus by furin or furin-like proteases to produce a small secreted peptide which inhibits the deposition of beta-amyloid. Mutations which result in extension of the C-terminal end of the encoded protein, thereby increasing the size of the secreted peptide, are associated with two neurodegenerative diseases, familial British dementia and familial Danish dementia. [provided by RefSeq, Oct 2009]

Protein Families: Druggable Genome, Transmembrane

Product images:



Coomassie blue staining of purified ITM2B protein (Cat# [TP302377]). The protein was produced from HEK293T cells transfected with ITM2B cDNA clone (Cat# [RC202377]) using MegaTran 2.0 (Cat# [TT210002]).