

## Product datasheet for PH302372

### ALDH16A1 (NM\_153329) Human Mass Spec Standard

#### Product data:

Product Type:	Mass Spec Standards
Description:	ALDH16A1 MS Standard C13 and N15-labeled recombinant protein (NP_699160)
Species:	Human
Expression Host:	HEK293
Expression cDNA Clone or AA Sequence:	RC202372
Predicted MW:	85.1 kDa
Protein Sequence:	>RC202372 protein sequence Red=Cloning site Green=Tags(s)

MAATRAGPRAREIFTSLEYGVPESHACALAWLDTQDRCLGHYVNGKWLKPEHRNSVPCQDPITGENLAS  
CLQAQAEDVAAAVEAARMAFKGWSAHPGVVRAQHLLRLAEVIQKHQRLLWTLESVLTGRAVREVRDGDVQ  
LAQQLLHYHAIQASTQEEALAGWPMGVIIGLILPPTFSFLEMMWRICPALAVGCTVVVALVPPASPAPLLL  
AQLAGELGPFPGILNVVSGPASPVLILASQPGIRKVAFCGAPEEGRALRRSLAGECAELGLALGTESLLL  
LTDADVDSAVEGVVDAAWSDRGPGGLRLLIQESVWDEAMRRLQERMGRRLRSGRGLDGAVIDMARGAAAC  
DLVQRFVREAQSQGAQVFQAGDVPSEPFYPPTLVSNLPPASPCAQVEVPWPVVVASFRTAKEALLVAN  
GTPRGGASVWSERLQQAELGYGLQVGTVWINAHGLRDPVPTGGCKESGCSWHGGPDGLYEYLRPSGT  
PARLSCLSKNLNYDTFGLAVPSTLPAGPEIGPSPAPPYGLFVGGRFQAPGARSSRPIRDSSGNLHGYYVAE  
GGAKDIRGAVEAAHQAFPGWAGQSPGARAALLWALAAALERRKSTLASRLERQGAELKAAEALEVELSARR  
LRAWGARVQAQGHQLQVAGLRGPVLRRLREPLGVLAVVCPDEWPLLAFLVSLAPALAYGNTVVMVPSAACP  
LLALEVCQDMATVFPAGLANVVTGDRDHLTRCLALHQDVQAMWYFGSAQGSQFVEWASAGNLKPVWASRG  
CPRAWDQEAEGAGPELGLRVARTKALWLPMD

TRPLEQKLI SEEDLAANDILDYKDDDDKV

Tag:	C-Myc/DDK
Purity:	> 80% as determined by SDS-PAGE and Coomassie blue staining
Concentration:	>0.05 µg/µL as determined by microplate BCA method
Labeling Method:	Labeled with [U- <sup>13</sup> C <sub>6</sub> , <sup>15</sup> N <sub>4</sub> ]-L-Arginine and [U- <sup>13</sup> C <sub>6</sub> , <sup>15</sup> N <sub>2</sub> ]-L-Lysine
Buffer:	25 mM Tris-HCl, 100 mM glycine, pH 7.3
Storage:	Store at -80°C. Avoid repeated freeze-thaw cycles.
Stability:	Stable for 3 months from receipt of products under proper storage and handling conditions.
RefSeq:	<a href="#">NP_699160</a>



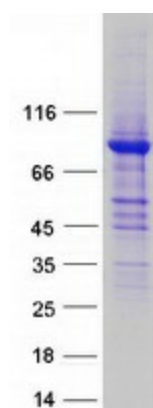
[View online »](#)

RefSeq Size: 3119  
RefSeq ORF: 2406  
Locus ID: 126133  
UniProt ID: [Q8IZ83](#)  
Cytogenetics: 19q13.33

**Summary:** This gene encodes a member of the aldehyde dehydrogenase superfamily. The family members act on aldehyde substrates and use nicotinamide adenine dinucleotide phosphate (NADP) as a cofactor. This gene is conserved in chimpanzee, dog, cow, mouse, rat, and zebrafish. The protein encoded by this gene interacts with maspardin, a protein that when truncated is responsible for Mast syndrome. Alternatively spliced transcript variants encoding different isoforms have been found for this gene. [provided by RefSeq, Apr 2010]

**Protein Families:** Druggable Genome

### Product images:



Coomassie blue staining of purified ALDH16A1 protein (Cat# [TP302372]). The protein was produced from HEK293T cells transfected with ALDH16A1 cDNA clone (Cat# [RC202372]) using MegaTran 2.0 (Cat# [TT210002]).