

Product datasheet for PH302346

LYRM4 (NM_020408) Human Mass Spec Standard

Product data:

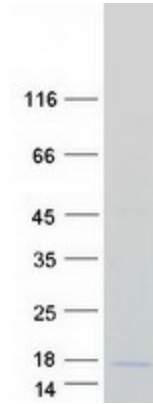
Product Type:	Mass Spec Standards
Description:	LYRM4 MS Standard C13 and N15-labeled recombinant protein (NP_065141)
Species:	Human
Expression Host:	HEK293
Expression cDNA Clone or AA Sequence:	RC202346
Predicted MW:	10.7 kDa
Protein Sequence:	>RC202346 protein sequence Red=Cloning site Green=Tags(s) MAASSRAQVLALYRAMLRRESKRFSAYNYRITYAVRRIRDAFRENKNVKDPVEIQTLVNKAKRDLGVIRRQV HIGQLYSTDKLIIENRDMPT TRTRPLEQKLISEEDLAANDILDYKDDDDKV
Tag:	C-Myc/DDK
Purity:	> 80% as determined by SDS-PAGE and Coomassie blue staining
Concentration:	>0.05 µg/µL as determined by microplate BCA method
Labeling Method:	Labeled with [U- 13C6, 15N4]-L-Arginine and [U- 13C6, 15N2]-L-Lysine
Buffer:	25 mM Tris-HCl, 100 mM glycine, pH 7.3
Storage:	Store at -80°C. Avoid repeated freeze-thaw cycles.
Stability:	Stable for 3 months from receipt of products under proper storage and handling conditions.
RefSeq:	NP_065141
RefSeq Size:	1514
RefSeq ORF:	273
Synonyms:	C6orf149; CGI-203; COXPD19; ISD11
Locus ID:	57128
UniProt ID:	Q9HD34
Cytogenetics:	6p25.1



[View online »](#)

Summary:

The protein encoded by this gene is found in both mitochondria and the nucleus, where it binds cysteine desulfurase and helps free inorganic sulfur for Fe/S clusters. Disruption of this gene negatively impacts mitochondrial and cytosolic iron homeostasis. [provided by RefSeq, Sep 2016]

Product images:

Coomassie blue staining of purified LYRM4 protein (Cat# [TP302346]). The protein was produced from HEK293T cells transfected with LYRM4 cDNA clone (Cat# [RC202346]) using MegaTran 2.0 (Cat# [TT210002]).