

Product datasheet for PH302339

HMGN3 (NM_138730) Human Mass Spec Standard

Product data:

| | |
|---------------------------------------|--|
| Product Type: | Mass Spec Standards |
| Description: | HMGN3 MS Standard C13 and N15-labeled recombinant protein (NP_620058) |
| Species: | Human |
| Expression Host: | HEK293 |
| Expression cDNA Clone or AA Sequence: | RC202339 |
| Predicted MW: | 8.4 kDa |
| Protein Sequence: | >RC202339 protein sequence Red=Cloning site Green=Tags(s) MPKRKSPENTEGKDGSKVTKQEPTRRSARLSAKPAPPKPEPKPRKTSAKKEPGAKISRGAKGKKEEKQEA GKEGTEN TRTRPLEQKLISEEDLAANDILDYKDDDDKV |
| Tag: | C-Myc/DDK |
| Purity: | > 80% as determined by SDS-PAGE and Coomassie blue staining |
| Concentration: | >0.05 µg/µL as determined by microplate BCA method |
| Labeling Method: | Labeled with [U- 13C6, 15N4]-L-Arginine and [U- 13C6, 15N2]-L-Lysine |
| Buffer: | 25 mM Tris-HCl, 100 mM glycine, pH 7.3 |
| Storage: | Store at -80°C. Avoid repeated freeze-thaw cycles. |
| Stability: | Stable for 3 months from receipt of products under proper storage and handling conditions. |
| RefSeq: | NP_620058 |
| RefSeq Size: | 894 |
| RefSeq ORF: | 231 |
| Synonyms: | PNAS-24; PNAS-25; TRIP7 |
| Locus ID: | 9324 |
| UniProt ID: | Q15651 |
| Cytogenetics: | 6q14.1 |



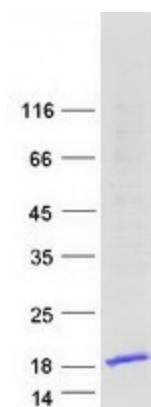
[View online »](#)

Summary:

The protein encoded by this gene binds thyroid hormone receptor beta in the presence of thyroid hormone. The encoded protein, a member of the HMGN protein family, is thought to reduce the compactness of the chromatin fiber in nucleosomes, thereby enhancing transcription from chromatin templates. Alternatively spliced transcript variants encoding different isoforms have been found for this gene. There is a related pseudogene on chromosome 1. [provided by RefSeq, Jan 2016]

Protein Families:

Druggable Genome

Product images:

Coomassie blue staining of purified HMGN3 protein (Cat# [TP302339]). The protein was produced from HEK293T cells transfected with HMGN3 cDNA clone (Cat# [RC202339]) using MegaTran 2.0 (Cat# [TT210002]).