

Product datasheet for PH302336

CPVL (NM_031311) Human Mass Spec Standard

Product data:

Product Type:	Mass Spec Standards
Description:	CPVL MS Standard C13 and N15-labeled recombinant protein (NP_112601)
Species:	Human
Expression Host:	HEK293
Expression cDNA Clone or AA Sequence:	RC202336
Predicted MW:	54.2 kDa
Protein Sequence:	>RC202336 protein sequence Red=Cloning site Green=Tags(s)

MVGAMWKVIVSLVLLMPGPCDGLFRSLYRSVSMPPKGDGSGQPLFLTPYIEAGKIQKGRELSLVGPFPGLN
MKS YAGFLT VNKTYNSNLFFWFFPAQIQPEDAPVVLWLQGGPGGSSMFGLFVEHGPYVVTSNMTLRDRDF
PWTTTSLMLYIDNPVGTGFSFTDDTHGYAVNEDDVARDLYSALIQFFQIFPEYKNNDFYVTGESYAGKYV
PAIAHLIHSLNPVREVKINLNGIAIGDGYSDPES IGGYAEFLYQIGLLDEKQKKYFQKQCHECIEHIRK
QNWFEAFEILDKLLDGLTSDPSYFQNVGTGCSNYNFLRCTEPEDQLYYVKFLSLPEVRQAIHVGNOQTFN
DGTIVEKYLREDTVQSVKPWLTEIMNNYKVL IYNGQLDIIVAAALTERSLMGMDWKGSGEYKKAEEKVWK
IFKSDSEVAGYIRQVGFHQVIIRGGGHILPYDQPLRAFDMINRFIYKGWDPYVG

TRTRPLEQKLI SEEDLAANDILDYKDDDDKV

Tag:	C-Myc/DDK
Purity:	> 80% as determined by SDS-PAGE and Coomassie blue staining
Concentration:	>0.05 µg/µL as determined by microplate BCA method
Labeling Method:	Labeled with [U- ¹³ C ₆ , ¹⁵ N ₄]-L-Arginine and [U- ¹³ C ₆ , ¹⁵ N ₂]-L-Lysine
Buffer:	25 mM Tris-HCl, 100 mM glycine, pH 7.3
Storage:	Store at -80°C. Avoid repeated freeze-thaw cycles.
Stability:	Stable for 3 months from receipt of products under proper storage and handling conditions.
RefSeq:	<u>NP_112601</u>
RefSeq Size:	1691
RefSeq ORF:	1428
Synonyms:	HVLP



[View online »](#)

Locus ID: 54504

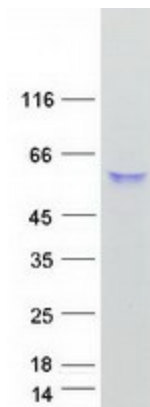
UniProt ID: [Q9H3G5](#), [A0A024RA40](#)

Cytogenetics: 7p14.3

Summary: The protein encoded by this gene is a carboxypeptidase and bears strong sequence similarity to serine carboxypeptidases. Carboxypeptidases are a large class of proteases that act to cleave a single amino acid from the carboxy termini of proteins or peptides. The exact function of this protein, however, has not been determined. [provided by RefSeq, Jan 2017]

Protein Families: Druggable Genome, Protease

Product images:



Coomassie blue staining of purified CPVL protein (Cat# [TP302336]). The protein was produced from HEK293T cells transfected with CPVL cDNA clone (Cat# [RC202336]) using MegaTran 2.0 (Cat# [TT210002]).