

Product datasheet for PH302335

SQOR (NM_021199) Human Mass Spec Standard

Product data:

Product Type:	Mass Spec Standards
Description:	SQRDL MS Standard C13 and N15-labeled recombinant protein (NP_067022)
Species:	Human
Expression Host:	HEK293
Expression cDNA Clone or AA Sequence:	RC202335
Predicted MW:	50 kDa
Protein Sequence:	>RC202335 protein sequence Red=Cloning site Green=Tags(s)

MVPLVAVVSGPRAQLFACLLRLGTQQVGPLQLHTGASHAARNHYEVLVLGGSGGITMAARMKRKVGAE
VAIVEPSEHFYQPIWTLVGAGAKQLSSSRPTASVIPSGVEWIKARVTELNPKNCIHTDDDEKISYRY
LIIALGIQLDYEKIKGLPEGFAHPKIGSNYSVKTVEKTWKALQDFKEGNAIFTFPNTPVKAGAPQKIMY
LSEAYFRKTGKRKANIIFNTSLGAIKGVKADALQEI IQERNLTVNYKKNLIEVRADKQEA VFNLDK
PGETQVISYEMLVHTPPMSPDLKTSVADAGWVDVKETLQHRRYPNVFGIGDCTNLPTSKTAAAVA
AQSGLDRTISVIMKNQPTTKYDGYTSCPLVTGYNRVILAEFDYKAEPLTFPFDQSKERLSMYLMKAD
LMPFLYWNMLRGYWGGPAFLRKLFLHGM

TRTRPLEQKLI SEEDLAANDILDYKDDDDKV

Tag:	C-Myc/DDK
Purity:	> 80% as determined by SDS-PAGE and Coomassie blue staining
Concentration:	>0.05 µg/µL as determined by microplate BCA method
Labeling Method:	Labeled with [U- ¹³ C ₆ , ¹⁵ N ₄]-L-Arginine and [U- ¹³ C ₆ , ¹⁵ N ₂]-L-Lysine
Buffer:	25 mM Tris-HCl, 100 mM glycine, pH 7.3
Storage:	Store at -80°C. Avoid repeated freeze-thaw cycles.
Stability:	Stable for 3 months from receipt of products under proper storage and handling conditions.
RefSeq:	NP_067022
RefSeq Size:	2003
RefSeq ORF:	1350
Synonyms:	CGI-44; PRO1975; SQR; SQRDL



[View online »](#)

Locus ID: 58472

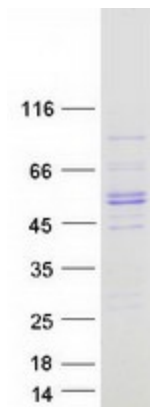
UniProt ID: [Q9Y6N5](#), [A0A024R5X2](#)

Cytogenetics: 15q21.1

Summary: The protein encoded by this gene may function in mitochondria to catalyze the conversion of sulfide to persulfides, thereby decreasing toxic concentrations of sulfide. Alternative splicing results in multiple transcript variants that encode the same protein. [provided by RefSeq, Sep 2012]

Protein Families: Druggable Genome

Product images:



Coomassie blue staining of purified SQOR protein (Cat# [TP302335]). The protein was produced from HEK293T cells transfected with SQOR cDNA clone (Cat# [RC202335]) using MegaTran 2.0 (Cat# [TT210002]).