

Product datasheet for PH302331

MAGEH1 (NM_014061) Human Mass Spec Standard

Product data:

Product Type:	Mass Spec Standards
Description:	MAGEH1 MS Standard C13 and N15-labeled recombinant protein (NP_054780)
Species:	Human
Expression Host:	HEK293
Expression cDNA Clone or AA Sequence:	RC202331
Predicted MW:	24.4 kDa
Protein Sequence:	<p>>RC202331 protein sequence</p> <p>Red=Cloning site Green=Tags(s)</p> <p>MPRGRKSRRRRNARAAEENRNRIQASEASETPMAASVVASTPEDDLSPPEEDPSTPEEASTTPEEASS TAQAQKPSVPRSNFQGTKKSLMSILALIFIMGNSAKEALVWKVLGKLGMPGRQHSIFGDPKKIVTEEF VRRGYLIYKPVPRSSPVEYEFFWGPRAHVESKLVKMHFVARVRNRCSKDWPCNYDWDSDDDAEVEAILN SGARGYSAP</p> <p>TRTRPLEQKLISEEDLAANDILDYKDDDDKV</p>
Tag:	C-Myc/DDK
Purity:	> 80% as determined by SDS-PAGE and Coomassie blue staining
Concentration:	>0.05 µg/µL as determined by microplate BCA method
Labeling Method:	Labeled with [U- ¹³ C ₆ , ¹⁵ N ₄]-L-Arginine and [U- ¹³ C ₆ , ¹⁵ N ₂]-L-Lysine
Buffer:	25 mM Tris-HCl, 100 mM glycine, pH 7.3
Storage:	Store at -80°C. Avoid repeated freeze-thaw cycles.
Stability:	Stable for 3 months from receipt of products under proper storage and handling conditions.
RefSeq:	NP_054780
RefSeq Size:	1485
RefSeq ORF:	657
Synonyms:	APR-1; APR1; MAGEH
Locus ID:	28986
UniProt ID:	Q9H213

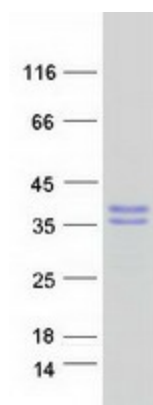

[View online »](#)

Cytogenetics: Xp11.21

Summary: This gene belongs to the non-CT (non cancer/testis) subgroup of the melanoma-associated antigen (MAGE) superfamily. The encoded protein is likely associated with apoptosis, cell cycle arrest, growth inhibition or cell differentiation. The protein may be involved in the atRA (all-trans retinoic acid) signaling through the STAT1-alpha (signal transducer and activator of transcription 1-alpha) pathway. [provided by RefSeq, Aug 2013]

Protein Families: Transmembrane

Product images:



Coomassie blue staining of purified MAGEH1 protein (Cat# [TP302331]). The protein was produced from HEK293T cells transfected with MAGEH1 cDNA clone (Cat# [RC202331]) using MegaTran 2.0 (Cat# [TT210002]).