

Product datasheet for PH302326

DIMT1L (DIMT1) (NM_014473) Human Mass Spec Standard

Product data:

Product Type:	Mass Spec Standards
Description:	DIMT1L MS Standard C13 and N15-labeled recombinant protein (NP_055288)
Species:	Human
Expression Host:	HEK293
Expression cDNA Clone or AA Sequence:	RC202326
Predicted MW:	35.2 kDa
Protein Sequence:	>RC202326 protein sequence Red =Cloning site Green =Tags(s)

MPKVKSGAIGRRRGRQEQRRELKSAGGLMFNTGIGQHILKNPLIINSIIDKAALRPTDVVLEVPGTGNM
TVKLLLEKAKKVACELDPRLVAELHKRVQGTPVASKLQVLVGDVLKTDLPFFDTCVANLPYQISSPFVFK
LLHHRPFFRCAILMFQREFALRLVAKPGDKLYCRLSINTQLLARVDHLMKVGKNNFRPPPKVESSVRIE
PKNPPPPINFQEWDLVRITFVRKNKTLAAFKSSAVQQLLEKNYRIHCSVHNIIIPEDFSIADKIQQIL
TSTGFSDKRARSMDIDDFIRLLHGFNAEGIHFS

TRTRPLE**QKL**ISEEDLAANDILDYKDDDDKV

Tag:	C-Myc/DDK
Purity:	> 80% as determined by SDS-PAGE and Coomassie blue staining
Concentration:	>0.05 µg/µL as determined by microplate BCA method
Labeling Method:	Labeled with [U- ¹³ C ₆ , ¹⁵ N ₄]-L-Arginine and [U- ¹³ C ₆ , ¹⁵ N ₂]-L-Lysine
Buffer:	25 mM Tris-HCl, 100 mM glycine, pH 7.3
Storage:	Store at -80°C. Avoid repeated freeze-thaw cycles.
Stability:	Stable for 3 months from receipt of products under proper storage and handling conditions.
RefSeq:	<u>NP_055288</u>
RefSeq Size:	1557
RefSeq ORF:	939
Synonyms:	DIM1; DIMT1L; HSA9761; HUSSY5
Locus ID:	27292



[View online »](#)

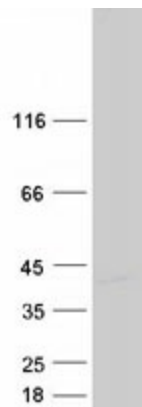
UniProt ID: [Q9UNQ2](#), [A8K9K8](#)

Cytogenetics: 5q12.1

Summary: The protein encoded by this gene is a methyltransferase that is responsible for dimethylation of adjacent adenosines near the 18S rRNA decoding site. The encoded protein is essential for ribosome biogenesis, although its catalytic activity is not involved in the process. The yeast ortholog of this protein functions in the cytoplasm while this protein functions in the nucleus. [provided by RefSeq, Jan 2017]

Protein Families: Druggable Genome

Product images:



Coomassie blue staining of purified DIMT1 protein (Cat# [TP302326]). The protein was produced from HEK293T cells transfected with DIMT1 cDNA clone (Cat# [RC202326]) using MegaTran 2.0 (Cat# [TT210002]).