

Product datasheet for PH302310

SPG3A (ATL1) (NM_015915) Human Mass Spec Standard

Product data:

Product Type:	Mass Spec Standards
Description:	ATL1 MS Standard C13 and N15-labeled recombinant protein (NP_056999)
Species:	Human
Expression Host:	HEK293
Expression cDNA Clone or AA Sequence:	RC202310
Predicted MW:	63.4 kDa
Protein Sequence:	>RC202310 representing NM_015915 Red=Cloning site Green=Tags(s)
	<p>MAKNRRDRNSWGGFSEKTYEWSSEEEEPVKAGPVQVLIVKDEHSFELDETALNRILLSEAVRDKEVVAV SVAGAFRKGKSFMLDFMLRYMYNQESVDWVG DYNEPLTGF SWRGGSERETTGIQIWSEIFLINKPDGKKV AVLLMDTQGTFDQSQTLRDSATVFALSTMISSIQVYNLSQNVQEDDLQHLQLCTEYGR LAMEETFLKPFQ SLIFLVRDWSFPYEF SYGADGGAKFLEKRLKVSNGNQEELQNVKRKHIHSCFTNISCFLLPHPLK VATNP NFDGKLEIDDEFIKNLKILIPWLLSPESLDIKEINGNKITCRGLVEYFKAYIKIYQGEELPHPKSMLQA TAEANNLAAVATAKD TYNKKMEEICGGDKPFLAPNDLQTKHLQLKEESVKLFRGVKMGGEF SRRYLQQ LESEIDELYIQYIKHNSKNIFHAARTPATLFVVIFITYVIAGVTGFIGLDIIASLCNMIMGLTLITLCT WAYIRYSGEYRELGAVIDQVAAALWDQGSTNEALYKLYSAAATHRHLYHQAFPTPKSESTEQSEK KKM</p> <p>TRTRPLEQKLI SEEDLAANDILDYKDDDDKV</p>
Tag:	C-Myc/DDK
Purity:	> 80% as determined by SDS-PAGE and Coomassie blue staining
Concentration:	>0.05 µg/µL as determined by microplate BCA method
Labeling Method:	Labeled with [U- ¹³ C ₆ , ¹⁵ N ₄]-L-Arginine and [U- ¹³ C ₆ , ¹⁵ N ₂]-L-Lysine
Buffer:	25 mM Tris-HCl, 100 mM glycine, pH 7.3
Storage:	Store at -80°C. Avoid repeated freeze-thaw cycles.
Stability:	Stable for 3 months from receipt of products under proper storage and handling conditions.
RefSeq:	NP_056999
RefSeq Size:	2271
RefSeq ORF:	1674



[View online »](#)

Synonyms: AD-FSP; atlastin1; FSP1; GBP3; HSN1D; SPG3; SPG3A

Locus ID: 51062

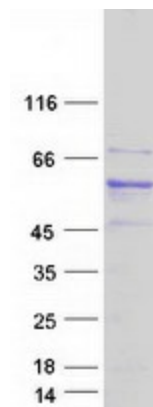
UniProt ID: [Q8WXF7](#), [A0A0S2Z5B0](#), [Q53F53](#)

Cytogenetics: 14q22.1

Summary: The protein encoded by this gene is a GTPase and a Golgi body transmembrane protein. The encoded protein can form a homotetramer and has been shown to interact with spastin and with mitogen-activated protein kinase kinase kinase 4. This protein may be involved in axonal maintenance as evidenced by the fact that defects in this gene are a cause of spastic paraplegia type 3. Three transcript variants encoding two different isoforms have been found for this gene. [provided by RefSeq, Jul 2008]

Protein Families: Druggable Genome, Transmembrane

Product images:



Coomassie blue staining of purified ATL1 protein (Cat# [TP302310]). The protein was produced from HEK293T cells transfected with ATL1 cDNA clone (Cat# [RC202310]) using MegaTran 2.0 (Cat# [TT210002]).