

## Product datasheet for PH302307

### PSMD3 (NM\_002809) Human Mass Spec Standard

#### Product data:

Product Type:	Mass Spec Standards
Description:	PSMD3 MS Standard C13 and N15-labeled recombinant protein (NP_002800)
Species:	Human
Expression Host:	HEK293
Expression cDNA Clone or AA Sequence:	RC202307
Predicted MW:	61 kDa
Protein Sequence:	>RC202307 protein sequence Red=Cloning site Green=Tags(s)

MKQEGSARRRGADKAKPPPGGGEQEP PPPAPQDVEMKEEAATGGGSGEADGKTA AAAAEHSQRELDTV  
TLEDIKEHVQLEKAVSGKEPRFVLRALRMLPSTSRRLNHVYLKAVQGGFFTSNNATRDFLLPFLEEMD  
TEADLQFRPRTGKAASNTLLPEVEAYLQLLVIFMMNSKRYKEAQKISDDL MQKISTQNRRLDLVAAKC  
YYYHARVYEFLDKLDVVRSLFHLARLRTATLRHDADGQATLLNLLLRNYLHYSLYDQAEKLVSKSVFPEQA  
NNNEWARYLYYTGRKAIQLEYSVARRTMTNALRKAPQHTAVGFKQTVHKLLIVVELLLGEIPDRLQFRQ  
PSLKRSLMPYFLLTQAVRTGNLAKFNQVLDQFGEKQADGTYTLIIRLRHNVIKTGVRMISLSYSRISLA  
DIAQKLQDSPEDAEIFVAKAIRDGVIEASINHEKGYVQSKEMIDIYSTREPQLAFHQRI SFCLDIHNMS  
VKAMRFPKSYNKDLES AEERREREQQDLEFAKEMAEDDDDSFP

TRTRPLEQKLI SEEDLAANDILDYKDDDDKV

Tag:	C-Myc/DDK
Purity:	> 80% as determined by SDS-PAGE and Coomassie blue staining
Concentration:	>0.05 µg/µL as determined by microplate BCA method
Labeling Method:	Labeled with [U- <sup>13</sup> C <sub>6</sub> , <sup>15</sup> N <sub>4</sub> ]-L-Arginine and [U- <sup>13</sup> C <sub>6</sub> , <sup>15</sup> N <sub>2</sub> ]-L-Lysine
Buffer:	25 mM Tris-HCl, 100 mM glycine, pH 7.3
Storage:	Store at -80°C. Avoid repeated freeze-thaw cycles.
Stability:	Stable for 3 months from receipt of products under proper storage and handling conditions.
RefSeq:	<a href="#">NP_002800</a>
RefSeq Size:	2187
RefSeq ORF:	1602



[View online »](#)

**Synonyms:** P58; RPN3; S3; TSTA2

**Locus ID:** 5709

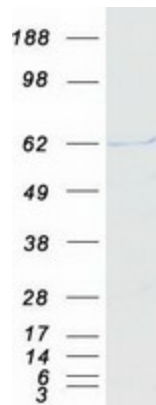
**UniProt ID:** [O43242](#)

**Cytogenetics:** 17q21.1

**Summary:** The 26S proteasome is a multicatalytic proteinase complex with a highly ordered structure composed of 2 complexes, a 20S core and a 19S regulator. The 20S core is composed of 4 rings of 28 non-identical subunits; 2 rings are composed of 7 alpha subunits and 2 rings are composed of 7 beta subunits. The 19S regulator is composed of a base, which contains 6 ATPase subunits and 2 non-ATPase subunits, and a lid, which contains up to 10 non-ATPase subunits. Proteasomes are distributed throughout eukaryotic cells at a high concentration and cleave peptides in an ATP/ubiquitin-dependent process in a non-lysosomal pathway. This gene encodes a member of the proteasome subunit S3 family that functions as one of the non-ATPase subunits of the 19S regulator lid. Single nucleotide polymorphisms in this gene are associated with neutrophil count. [provided by RefSeq, Jul 2012]

**Protein Pathways:** Proteasome

### Product images:



Coomassie blue staining of purified PSMD3 protein (Cat# [TP302307]). The protein was produced from HEK293T cells transfected with PSMD3 cDNA clone (Cat# [RC202307]) using MegaTran 2.0 (Cat# [TT210002]).