

## Product datasheet for PH302300

### POLR1D (NM\_152705) Human Mass Spec Standard

#### Product data:

Product Type:	Mass Spec Standards
Description:	POLR1D MS Standard C13 and N15-labeled recombinant protein (NP_689918)
Species:	Human
Expression Host:	HEK293
Expression cDNA Clone or AA Sequence:	RC202300
Predicted MW:	14.3 kDa
Protein Sequence:	>RC202300 protein sequence Red=Cloning site Green=Tags(s)  MEEDQELERKAIEELLKEAKRGKTRAETMGPMGWMKCPLASTNKRFLINTIKNTLPSHKEQDHEQKEGDK EPAKSQAQKEENPKKHRSHPYKHSFRARGSASYSPPRKRSSQDKYEKRSNRR  TRTRPLEQKLISEEDLAANDILDYKDDDDKV
Tag:	C-Myc/DDK
Purity:	> 80% as determined by SDS-PAGE and Coomassie blue staining
Concentration:	>0.05 µg/µL as determined by microplate BCA method
Labeling Method:	Labeled with [U- 13C6, 15N4]-L-Arginine and [U- 13C6, 15N2]-L-Lysine
Buffer:	25 mM Tris-HCl, 100 mM glycine, pH 7.3
Storage:	Store at -80°C. Avoid repeated freeze-thaw cycles.
Stability:	Stable for 3 months from receipt of products under proper storage and handling conditions.
RefSeq:	<a href="#">NP_689918</a>
RefSeq Size:	2043
RefSeq ORF:	366
Synonyms:	AC19; POLR1C; RPA9; RPA16; RPAC2; RPC16; RPO1-3; TCS2
Locus ID:	51082
UniProt ID:	<a href="#">P0DPB5</a>
Cytogenetics:	13q12.2



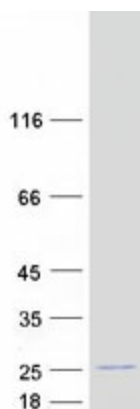
[View online »](#)

**Summary:** The protein encoded by this gene is a component of the RNA polymerase I and RNA polymerase III complexes, which function in the synthesis of ribosomal RNA precursors and small RNAs, respectively. Mutations in this gene are a cause of Treacher Collins syndrome (TCS), a craniofacial development disorder. Alternative splicing results in multiple transcript variants. [provided by RefSeq, Apr 2011]

**Protein Families:** Stem cell - Pluripotency, Transcription Factors

**Protein Pathways:** Cytosolic DNA-sensing pathway, Metabolic pathways, Purine metabolism, Pyrimidine metabolism, RNA polymerase

### Product images:



Coomassie blue staining of purified POLR1D protein (Cat# [TP302300]). The protein was produced from HEK293T cells transfected with POLR1D cDNA clone (Cat# [RC202300]) using MegaTran 2.0 (Cat# [TT210002]).