

## Product datasheet for PH302297

### LRTOMT (NM\_145309) Human Mass Spec Standard

#### Product data:

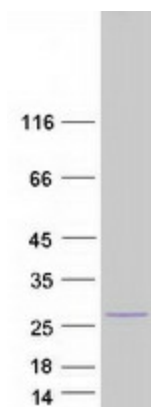
Product Type:	Mass Spec Standards
Description:	LRTOMT MS Standard C13 and N15-labeled recombinant protein (NP_660352)
Species:	Human
Expression Host:	HEK293
Expression cDNA Clone or AA Sequence:	RC202297
Predicted MW:	22.2 kDa
Protein Sequence:	>RC202297 protein sequence Red=Cloning site Green=Tags(s)  MNKRDYMNTSVQEPPLDYSFRSIHVIQDLVNEEPRTGLRPLKRSKSGKSLTQSLWLNNNVNLNDRDFNQV ASQLLEHPENLAWIDL SFNDLTSIDPVL TTFNLSVLYLHGNSIQRLGEVKNLAVLPRLRSLTLHGPNME EEKGYRQYVLC TLSRITTFDFSGVTKADR TTAEVWKR MN IKPKKAWTKQNTL  TRTRPLEQKLISEEDLAANDILDYKDDDDKV
Tag:	C-Myc/DDK
Purity:	> 80% as determined by SDS-PAGE and Coomassie blue staining
Concentration:	>0.05 µg/µL as determined by microplate BCA method
Labeling Method:	Labeled with [U- <sup>13</sup> C <sub>6</sub> , <sup>15</sup> N <sub>4</sub> ]-L-Arginine and [U- <sup>13</sup> C <sub>6</sub> , <sup>15</sup> N <sub>2</sub> ]-L-Lysine
Buffer:	25 mM Tris-HCl, 100 mM glycine, pH 7.3
Storage:	Store at -80°C. Avoid repeated freeze-thaw cycles.
Stability:	Stable for 3 months from receipt of products under proper storage and handling conditions.
RefSeq:	<a href="#">NP_660352</a>
RefSeq Size:	2658
RefSeq ORF:	576
Locus ID:	220074
UniProt ID:	<a href="#">Q96E66</a> , <a href="#">A0A024R5L6</a>
Cytogenetics:	11q13.4



[View online »](#)

**Summary:**

This locus represents naturally occurring readthrough transcription between the neighboring LRR51 (leucine-rich repeat containing 51) and TOMT (transmembrane O-methyltransferase) genes on chromosome 11. The readthrough transcript encodes a fusion protein that shares sequence identity with each individual gene product. Multiple reports implicate mutations in this gene in nonsyndromic deafness.[provided by RefSeq, Feb 2021]

**Product images:**

Coomassie blue staining of purified LRTOMT protein (Cat# [TP302297]). The protein was produced from HEK293T cells transfected with LRTOMT cDNA clone (Cat# [RC202297]) using MegaTran 2.0 (Cat# [TT210002]).