

Product datasheet for PH302296

Gemin 6 (GEMIN6) (NM_024775) Human Mass Spec Standard

Product data:

Product Type:	Mass Spec Standards
Description:	GEMIN6 MS Standard C13 and N15-labeled recombinant protein (NP_079051)
Species:	Human
Expression Host:	HEK293
Expression cDNA Clone or AA Sequence:	RC202296
Predicted MW:	18.9 kDa
Protein Sequence:	>RC202296 protein sequence Red=Cloning site Green=Tags(s) MSEWMKKGPLEWQDYIYKEVRVTASEKNEYKGVLTTPV SANIVLVNLFLEDGSM SVTGIMGHAVQTVET MNEGDHRVREKLMHLFTSGDCKAYSPEDLEERKNLKKWLEKNHIPITEQGDAPRTL CVAGVLTIDPPYD PENCSSNEIILSRVQDLIEGHLTASQ TRTRPLEQKLI SEEDLAANDILDYKDDDDKV
Tag:	C-Myc/DDK
Purity:	> 80% as determined by SDS-PAGE and Coomassie blue staining
Concentration:	>0.05 µg/µL as determined by microplate BCA method
Labeling Method:	Labeled with [U- 13C6, 15N4]-L-Arginine and [U- 13C6, 15N2]-L-Lysine
Buffer:	25 mM Tris-HCl, 100 mM glycine, pH 7.3
Storage:	Store at -80°C. Avoid repeated freeze-thaw cycles.
Stability:	Stable for 3 months from receipt of products under proper storage and handling conditions.
RefSeq:	NP_079051
RefSeq Size:	705
RefSeq ORF:	501
Locus ID:	79833
UniProt ID:	Q8WXD5
Cytogenetics:	2p22.1

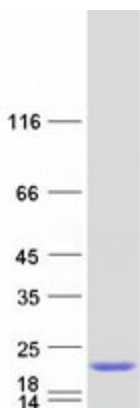


[View online »](#)

Summary: GEMIN6 is part of a large macromolecular complex, localized to both the cytoplasm and the nucleus, that plays a role in the cytoplasmic assembly of small nuclear ribonucleoproteins (snRNPs). Other members of this complex include SMN (MIM 600354), GEMIN2 (SIP1; MIM 602595), GEMIN3 (DDX20; MIM 606168), GEMIN4 (MIM 606969), and GEMIN5 (MIM 607005). [supplied by OMIM, Jul 2002]

Protein Families: Druggable Genome, Stem cell - Pluripotency

Product images:



Coomassie blue staining of purified GEMIN6 protein (Cat# [TP302296]). The protein was produced from HEK293T cells transfected with GEMIN6 cDNA clone (Cat# [RC202296]) using MegaTran 2.0 (Cat# [TT210002]).