

Product datasheet for PH302295

ROGDI (NM_024589) Human Mass Spec Standard

Product data:

Product Type:	Mass Spec Standards
Description:	ROGDI MS Standard C13 and N15-labeled recombinant protein (NP_078865)
Species:	Human
Expression Host:	HEK293
Expression cDNA Clone or AA Sequence:	RC202295
Predicted MW:	32.3 kDa
Protein Sequence:	>RC202295 protein sequence Red=Cloning site Green=Tags(s)

MATVMAATAAERAVLEEEFRWLLHDEVHAVLKQLQDILKEASLRFTLPGSGTEGPAKQENFILGSCGTDQ
YKGVLTQGDALSQADVNLKMPRNNQLLHFAFREDKQWKLQQIQDARNHVSQAIYLLTSRDQSYQFKTGA
EVLKLMDAVMLQLTRARNRLTTPATLTLPEIAASGLTRMFAPALPSDLLVNVYINLNKLCCLTVYQLHALQ
PNSTKNFRPAGGAVLHSPGAMFEWGSQRLEVSHVHKVECVIPWLNDALVYFTVSLQLCQQLKDKISVFSS
YWSYRPF

TRTRPLEQKLISEEDLAANDILDYKDDDDKV

Tag:	C-Myc/DDK
Purity:	> 80% as determined by SDS-PAGE and Coomassie blue staining
Concentration:	>0.05 µg/µL as determined by microplate BCA method
Labeling Method:	Labeled with [U- ¹³ C ₆ , ¹⁵ N ₄]-L-Arginine and [U- ¹³ C ₆ , ¹⁵ N ₂]-L-Lysine
Buffer:	25 mM Tris-HCl, 100 mM glycine, pH 7.3
Storage:	Store at -80°C. Avoid repeated freeze-thaw cycles.
Stability:	Stable for 3 months from receipt of products under proper storage and handling conditions.
RefSeq:	<u>NP_078865</u>
RefSeq Size:	1776
RefSeq ORF:	861
Synonyms:	KTZS
Locus ID:	79641



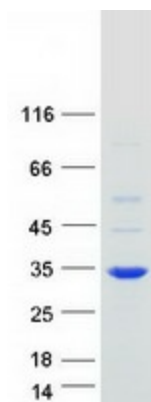
[View online »](#)

UniProt ID: [Q9GZN7](#)

Cytogenetics: 16p13.3

Summary: This gene encodes a protein of unknown function. Loss-of-function mutation in this gene cause Kohlschutter-Tonz syndrome. Alternate splicing results in multiple transcript variants. [provided by RefSeq, Mar 2012]

Product images:



Coomassie blue staining of purified ROGDI protein (Cat# [TP302295]). The protein was produced from HEK293T cells transfected with ROGDI cDNA clone (Cat# [RC202295]) using MegaTran 2.0 (Cat# [TT210002]).