

## Product datasheet for PH302292

### PSMD6 (NM\_014814) Human Mass Spec Standard

#### Product data:

Product Type:	Mass Spec Standards
Description:	PSMD6 MS Standard C13 and N15-labeled recombinant protein (NP_055629)
Species:	Human
Expression Host:	HEK293
Expression cDNA Clone or AA Sequence:	RC202292
Predicted MW:	45.4 kDa
Protein Sequence:	>RC202292 representing NM_014814 Red=Cloning site Green=Tags(s)  MPLENLEEEGLPKNPDLRIAQLRFLLSLPEHRGDAAVRDELMMAVRDNNMAPYYEALCKSLDWQIDVDLL NKMKANEDLKRLLDEELEDKAEKNGEIRDAMMAKAEYLCRIGDKEGALTAFRKTYDKTVALGHRLDI VFYLLRIGLFYMDNDLITRNTAKAKSLIEEGDWDRRNLKVVYQGLYCVAIRDFKQAAELFDTVSTFTS YELMDYKTFVYTYVYVSMIALERPDLREKVIKGAIEILEVLHSLPAVRQYLFSLYECRYSVFFQSLAVVEQ EMKKDWLFAPHYRYVREMRIHAYSQLESYRSLTLGYMAEAFGVGVEFIDQELSRFIAAGRLHCKIDKV NEIVETNRPSKNWQYQETIKKGDLLLNRVQKLSRVINM  TRTRPLEQKLI SEEDLAANDILDYKDDDDKV
Tag:	C-Myc/DDK
Purity:	> 80% as determined by SDS-PAGE and Coomassie blue staining
Concentration:	>0.05 µg/µL as determined by microplate BCA method
Labeling Method:	Labeled with [U- <sup>13</sup> C <sub>6</sub> , <sup>15</sup> N <sub>4</sub> ]-L-Arginine and [U- <sup>13</sup> C <sub>6</sub> , <sup>15</sup> N <sub>2</sub> ]-L-Lysine
Buffer:	25 mM Tris-HCl, 100 mM glycine, pH 7.3
Storage:	Store at -80°C. Avoid repeated freeze-thaw cycles.
Stability:	Stable for 3 months from receipt of products under proper storage and handling conditions.
RefSeq:	<a href="#">NP_055629</a>
RefSeq Size:	1308
RefSeq ORF:	1167
Synonyms:	p42A; p44S10; Rpn7; S10; SGA-113M
Locus ID:	9861



[View online »](#)

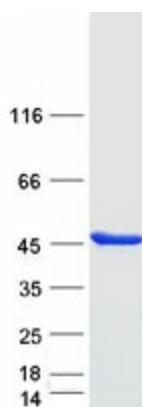
UniProt ID: [Q15008](#)

Cytogenetics: 3p14.1

Summary: This gene encodes a member of the protease subunit S10 family. The encoded protein is a subunit of the 26S proteasome which colocalizes with DNA damage foci and is involved in the ATP-dependent degradation of ubiquinated proteins. Alternative splicing results in multiple transcript variants [provided by RefSeq, Nov 2012]

Protein Pathways: Proteasome

### Product images:



Coomassie blue staining of purified PSMD6 protein (Cat# [TP302292]). The protein was produced from HEK293T cells transfected with PSMD6 cDNA clone (Cat# [RC202292]) using MegaTran 2.0 (Cat# [TT210002]).