

Product datasheet for PH302274

LEO1 (NM_138792) Human Mass Spec Standard

Product data:

Product Type:	Mass Spec Standards
Description:	LEO1 MS Standard C13 and N15-labeled recombinant protein (NP_620147)
Species:	Human
Expression Host:	HEK293
Expression cDNA Clone or AA Sequence:	RC202274
Predicted MW:	75.4 kDa
Protein Sequence:	>RC202274 protein sequence Red=Cloning site Green=Tags(s)

MADMEDLFGSDADSEAERKSDSDSGSDSDSQENAASGSNASGSESDQDERGDSGQPSNKELFGDDSEDEG
ASHHSGSDNHSERSDNSEASERSDHEDNDP SDVDQHSGSEAPNDDDEGHRSDGGSHHSEAGSEKAHS
DDEKHWGREDKSDQSDDEKI QNSDDEERAQGSDEDKLQNSDDDEKMQNTDDEERPQLSDDERQQLSEEEKA
NSDDERPVASDNDDEKQNSDDEEQQLSDEEKMQNSDDERPQASDEEHRHSDDEEQDHKSESARGSDSE
DEVLRMKRKNAIASDSEADSDTEVPKDNSGTMDLFGGADDISSGSDGEDKPPTPGQPVDENGLPQQQEE
EPIPETRIEVEIPKVNTDLGNDLYFVKLPNFLSVEPRPFDPPQYYEDEFEDEEMLDEEGRTRLKLVKVENTI
RWRIRRDEEGNEIKE SNARIVKWSDGMSLHLGNEVFDVYKAPLQGDHNLH FIRQGTGLQGQAVFKTKLT
FRPHSTDSATHRKMTLSLADRCSTQKIRILPMAGRDPECQRTMIKKEEERLRASIRRESQRRMREKQ
HQRGLSASYLEPDRYDEEEEGEESI SLAAIKNRYKGGIREERARIYSSDSDEGSEEDKAQRLLKAKKLT
DEEGEPSGKRKAEDDDKANKKHKYVVISDEEEEDDD

TRTRPLEQKLI SEEDLAANDILDYKDDDDKV

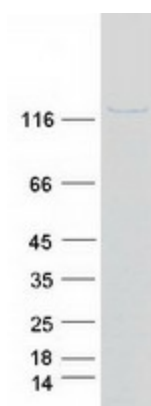
Tag:	C-Myc/DDK
Purity:	> 80% as determined by SDS-PAGE and Coomassie blue staining
Concentration:	>0.05 µg/µL as determined by microplate BCA method
Labeling Method:	Labeled with [U- 13C6, 15N4]-L-Arginine and [U- 13C6, 15N2]-L-Lysine
Buffer:	25 mM Tris-HCl, 100 mM glycine, pH 7.3
Storage:	Store at -80°C. Avoid repeated freeze-thaw cycles.
Stability:	Stable for 3 months from receipt of products under proper storage and handling conditions.
RefSeq:	NP_620147
RefSeq Size:	2202



[View online »](#)

RefSeq ORF:	1998
Synonyms:	RDL
Locus ID:	123169
UniProt ID:	Q8WVC0
Cytogenetics:	15q21.2
Summary:	LEO1, parafibromin (CDC73; MIM 607393), CTR9 (MIM 609366), and PAF1 (MIM 610506) form the PAF protein complex that associates with the RNA polymerase II subunit POLR2A (MIM 180660) and with a histone methyltransferase complex (Rozenblatt-Rosen et al., 2005 [PubMed 15632063]).[supplied by OMIM, Mar 2008]

Product images:



Coomassie blue staining of purified LEO1 protein (Cat# [TP302274]). The protein was produced from HEK293T cells transfected with LEO1 cDNA clone (Cat# [RC202274]) using MegaTran 2.0 (Cat# [TT210002]).