

Product datasheet for PH302268

TIMM13 (NM_012458) Human Mass Spec Standard

Product data:

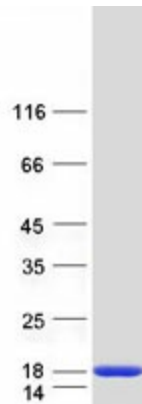
Product Type:	Mass Spec Standards
Description:	TIMM13 MS Standard C13 and N15-labeled recombinant protein (NP_036590)
Species:	Human
Expression Host:	HEK293
Expression cDNA Clone or AA Sequence:	RC202268
Predicted MW:	10.5 kDa
Protein Sequence:	>RC202268 protein sequence Red =Cloning site Green =Tags(s) MEGGFGSDFGGSGKLDPGLIMEQVKVQIAVANAQELLQRMTDKCFRKICIGKPGGSLDNSEQKCIAMCM DRYMDAWNTVSRAYNSRLQRERANM TRTRPLEQKLISEEDLAANDILDYKDDDDKV
Tag:	C-Myc/DDK
Purity:	> 80% as determined by SDS-PAGE and Coomassie blue staining
Concentration:	>0.05 µg/µL as determined by microplate BCA method
Labeling Method:	Labeled with [U- 13C6, 15N4]-L-Arginine and [U- 13C6, 15N2]-L-Lysine
Buffer:	25 mM Tris-HCl, 100 mM glycine, pH 7.3
Storage:	Store at -80°C. Avoid repeated freeze-thaw cycles.
Stability:	Stable for 3 months from receipt of products under proper storage and handling conditions.
RefSeq:	NP_036590
RefSeq Size:	2000
RefSeq ORF:	285
Synonyms:	ppv1; TIM13; TIM13B; TIMM13A; TIMM13B
Locus ID:	26517
UniProt ID:	Q9Y5L4
Cytogenetics:	19p13.3



[View online »](#)

Summary:

This gene encodes a member of the evolutionarily conserved TIMM (translocase of inner mitochondrial membrane) family of proteins that function as chaperones in the import of proteins from the cytoplasm into the mitochondrial inner membrane. Proteins of this family play a role in collecting substrate proteins from the translocase of the outer mitochondrial membrane (TOM) complex and delivering them to either the sorting and assembly machinery in the outer mitochondrial membrane (SAM) complex or the TIMM22 complex in the inner mitochondrial membrane. The encoded protein and the translocase of mitochondrial inner membrane 8a protein form a 70 kDa complex in the intermembrane space. [provided by RefSeq, Jul 2013]

Product images:

Coomassie blue staining of purified TIMM13 protein (Cat# [TP302268]). The protein was produced from HEK293T cells transfected with TIMM13 cDNA clone (Cat# [RC202268]) using MegaTran 2.0 (Cat# [TT210002]).