

## Product datasheet for PH302263

### LRCH4 (NM\_002319) Human Mass Spec Standard

#### Product data:

Product Type:	Mass Spec Standards
Description:	LRCH4 MS Standard C13 and N15-labeled recombinant protein (NP_002310)
Species:	Human
Expression Host:	HEK293
Expression cDNA Clone or AA Sequence:	RC202263
Predicted MW:	73.5 kDa
Protein Sequence:	>RC202263 protein sequence Red=Cloning site Green=Tags(s)

MAAAVAAPLAAGGEEAAATTSVPGSPGLPGRRAERALEEAVATGTLNLSNRRLKHFPRGAARSYDLSDI  
TQADLSRNRFPVEPEAACQLVSLLEGLSLYHNCLRCLNPALGNLTALTYLNLNRNQLSLLPPYICQLPLRV  
LIVSNKLGALPPDIGTLGSLRQLDVSSNELQSLPSELGSSLRDLNVRNQLSTLPEELGDLPLVRLD  
FSCNRVSRIPVSFCRLRHLQVILLDSNPLQSPPAQVCLKGKLHIFKYLSTEAGQRGSALGDLAPSRPPSF  
SPCPAEDLFPGHRYDGGLDSGFHSVDSGSKRWGNESTDEFSELSFRISELAREPRGPRERKEDGSADGD  
PVQIDFIDSHVPGEDEERTVVEEQRPPELSPGAGDRERAPSSRREEPAGEERRRPDTLQLWQERERRRQQ  
QSGAWGAPRKDSLKPLGRAVVGAAAVSTQAMHNGSPKSASQAGAAAGQGAPAPASQEPLPIAGPA  
TAPAPRPLGSIQRPNSFLFRSSSQSGSPSPDSVLRPRRYQPVPDEKDLMTQLRQVLESRLQRPLPEDL  
AEALASGVILCQLANQLRPRSVFPIHVPSPAVPKLSALKARKNVEFLEACRKMVGPEADLCSPDLLQG  
TARGLRTALEAVKRVGGKALPPLWPPSGLGGFVVVYVVLMLLLYVYTRLLGS

TRTRPLEQKLISEEDLAANDILDYKDDDDKV

Tag:	C-Myc/DDK
Purity:	> 80% as determined by SDS-PAGE and Coomassie blue staining
Concentration:	>0.05 µg/µL as determined by microplate BCA method
Labeling Method:	Labeled with [U- 13C6, 15N4]-L-Arginine and [U- 13C6, 15N2]-L-Lysine
Buffer:	25 mM Tris-HCl, 100 mM glycine, pH 7.3
Storage:	Store at -80°C. Avoid repeated freeze-thaw cycles.
Stability:	Stable for 3 months from receipt of products under proper storage and handling conditions.
RefSeq:	<a href="#">NP_002310</a>
RefSeq Size:	3255



[View online »](#)

RefSeq ORF: 2049

Synonyms: LRN; LRRN1; LRRN4; PP14183

Locus ID: 4034

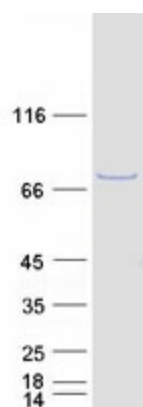
UniProt ID: [O75427](#)

Cytogenetics: 7q22.1

**Summary:** This gene encodes a protein that contains leucine-rich repeats (LRR) at its amino terminus and that is known to be involved in ligand binding. The carboxyl terminus may act as a membrane anchor. Identified structural elements suggest that the encoded protein resembles a receptor. [provided by RefSeq, Jul 2008]

**Protein Families:** Druggable Genome, Transmembrane

### Product images:



Coomassie blue staining of purified LRCH4 protein (Cat# [TP302263]). The protein was produced from HEK293T cells transfected with LRCH4 cDNA clone (Cat# [RC202263]) using MegaTran 2.0 (Cat# [TT210002]).