

Product datasheet for PH302231

SEMA4A (NM_022367) Human Mass Spec Standard

Product data:

Product Type:	Mass Spec Standards
Description:	SEMA4A MS Standard C13 and N15-labeled recombinant protein (NP_071762)
Species:	Human
Expression Host:	HEK293
Expression cDNA Clone or AA Sequence:	RC202231
Predicted MW:	83.6 kDa
Protein Sequence:	>RC202231 protein sequence Red=Cloning site Green=Tags(s)

MALPALGLDPWSLLGLFLFQLLQLLPTTTAGGGGQGPMPRVRYAGDERRALSFFHQKGLQDFDTLLLS
GDGNTLYVGAREAILALDIQDPGVPRLNKMIWPASDRKKSECAFKKKSNETQCFNFIKLVSYNVTHLY
TCGTFAFSPACTFIELQDSYLLPISEDKVMGKQSPFPDPAHKHTAVLVDGMLYSGTMNFLGSEPILMR
TLGSQPVLKTDNFLRWLHHDASFVAAIPSTQVVYFFFEETASEDFFERLHTSRVARVCKNDVGGEKLLQ
KKWTTFLKAQLLCTQPGQLPFNVIRHAVLLPADSPTAPHIYAVFTSQWQVGGTRSSAVCAFSLLDIERVF
KGKYKELNKETSRWTTYRGPETNPRPGSCSVGPSSDKALTFMKDHFMDQVVGTPLLVKSGVEYTRLAV
ETAQGLDGHSHLVMYLGTTTGSLSHKAVVSGDSSAHLVEEIQLPDPEPVRNLQLAPTQGAVFVFGSGGVW
RVPRANCVVYESCVDCLARDPHCAWDPESTRCCLLSAPNLNSWKQDMERGNPEWACASGPMRSRSLRPQS
RPQIIKEVLAVPNSILELPCPHLSALASYWSHGPAAVPEASSTVYNGSLLLIVQDGVGGLYQCWATENG
FSYPVISYWVDSQDQTLALDPELAGIPREHVKVPPLTRVSGGAALAAQQSYWPHFVTVTLFALVLSGALI
ILVASPLRALRARGKVQGCETLRPGKAPLSREQLQSPKECRTSASDVEDADNCLGTEVA

TRTRPLEQKLISEEDLAANDILDYKDDDDKV

Tag:	C-Myc/DDK
Purity:	> 80% as determined by SDS-PAGE and Coomassie blue staining
Concentration:	>0.05 µg/µL as determined by microplate BCA method
Labeling Method:	Labeled with [U- 13C6, 15N4]-L-Arginine and [U- 13C6, 15N2]-L-Lysine
Buffer:	25 mM Tris-HCl, 100 mM glycine, pH 7.3
Storage:	Store at -80°C. Avoid repeated freeze-thaw cycles.
Stability:	Stable for 3 months from receipt of products under proper storage and handling conditions.
RefSeq:	<u>NP_071762</u>



[View online »](#)

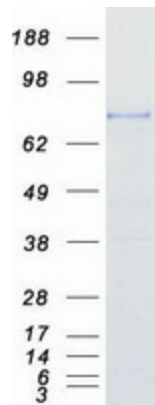
RefSeq Size:	3313
RefSeq ORF:	2283
Synonyms:	CORD10; RP35; SEMAB; SEMB
Locus ID:	64218
UniProt ID:	Q9H3S1
Cytogenetics:	1q22

Summary: This gene encodes a member of the semaphorin family of soluble and transmembrane proteins. Semaphorins are involved in numerous functions, including axon guidance, morphogenesis, carcinogenesis, and immunomodulation. The encoded protein is a single-pass type I membrane protein containing an immunoglobulin-like C2-type domain, a PSI domain and a sema domain. It inhibits axonal extension by providing local signals to specify territories inaccessible for growing axons. It is an activator of T-cell-mediated immunity and suppresses vascular endothelial growth factor (VEGF)-mediated endothelial cell migration and proliferation in vitro and angiogenesis in vivo. Mutations in this gene are associated with retinal degenerative diseases including retinitis pigmentosa type 35 (RP35) and cone-rod dystrophy type 10 (CORD10). Multiple alternatively spliced transcript variants encoding different isoforms have been identified.[provided by RefSeq, Sep 2010]

Protein Families: Transmembrane

Protein Pathways: Axon guidance

Product images:



Coomassie blue staining of purified SEMA4A protein (Cat# [TP302231]). The protein was produced from HEK293T cells transfected with SEMA4A cDNA clone (Cat# [RC202231]) using MegaTran 2.0 (Cat# [TT210002]).