

## Product datasheet for PH302223

### HYLS1 (NM\_145014) Human Mass Spec Standard

#### Product data:

Product Type:	Mass Spec Standards
Description:	HYLS1 MS Standard C13 and N15-labeled recombinant protein (NP_659451)
Species:	Human
Expression Host:	HEK293
Expression cDNA Clone or AA Sequence:	RC202223
Predicted MW:	32.9 kDa
Protein Sequence:	>RC202223 protein sequence Red=Cloning site Green=Tags(s)  MDPEERMLAAATAFTHIRAGQGEGDVRREAQSIQYDPYSKASVAPGKRPALPVQLQYPHVESNVPSETVS EASQRLRKPVMKRKVLRRKPDGEVLVTDESIISESESGTENDQDLWDLRQLMNVQFQEDKESSFDVSQK FNLPHHEYQGISQDQLICSLQREGMGSPAYEQDLIVASRPKSFILPKLDQLSRNRGKTDRVARYFEYKRDW DSIRLPGEDHRKELRWGVREQMLCRAEPQSKPQHIYVPPNNYLVPTEKKRSALRWGVRCDLANGVIPRKLK FPLSPS  TRTRPLEQKLISEEDLAANDILDYKDDDDKV
Tag:	C-Myc/DDK
Purity:	> 80% as determined by SDS-PAGE and Coomassie blue staining
Concentration:	>0.05 µg/µL as determined by microplate BCA method
Labeling Method:	Labeled with [U- <sup>13</sup> C <sub>6</sub> , <sup>15</sup> N <sub>4</sub> ]-L-Arginine and [U- <sup>13</sup> C <sub>6</sub> , <sup>15</sup> N <sub>2</sub> ]-L-Lysine
Buffer:	25 mM Tris-HCl, 100 mM glycine, pH 7.3
Storage:	Store at -80°C. Avoid repeated freeze-thaw cycles.
Stability:	Stable for 3 months from receipt of products under proper storage and handling conditions.
RefSeq:	<a href="#">NP_659451</a>
RefSeq Size:	1829
RefSeq ORF:	858
Synonyms:	HLS
Locus ID:	219844



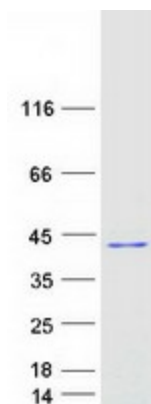
[View online »](#)

UniProt ID: [Q96M11](#), [A0A024R3K0](#)

Cytogenetics: 11q24.2

Summary: This gene encodes a protein localized to the cytoplasm. Mutations in this gene are associated with hydrolethalus syndrome. Multiple alternatively spliced variants, encoding the same protein, have been identified. [provided by RefSeq, Oct 2008]

### Product images:



Coomassie blue staining of purified HYLS1 protein (Cat# [TP302223]). The protein was produced from HEK293T cells transfected with HYLS1 cDNA clone (Cat# [RC202223]) using MegaTran 2.0 (Cat# [TT210002]).