

Product datasheet for PH302217

Endothelin 1 (EDN1) (NM_001955) Human Mass Spec Standard

Product data:

Product Type:	Mass Spec Standards
Description:	EDN1 MS Standard C13 and N15-labeled recombinant protein (NP_001946)
Species:	Human
Expression Host:	HEK293
Expression cDNA Clone or AA Sequence:	RC202217
Predicted MW:	24.4 kDa
Protein Sequence:	>RC202217 protein sequence Red=Cloning site Green=Tags(s) MDYLLMIFSLLFVACQGAPETA VLGAELSAVGENGGEKPTSPPWRLRRSKRCS CSSLMDKECVYFCHLD IIWVNTPEHVVPYGLGSPRSKRALENLLPTKATDRENRQCASQKDKKCNWFCQAGKELRAEDIMEKDW NHKKGKDCSKLGKKCIYQQLVRGRKIRRSSEEHLRQTRSETMRNSVKSSFHDPKLGKGPSRERYVTHNRA HW TRTRPLEQKLI SEEDLAANDILDYKDDDDKV
Tag:	C-Myc/DDK
Purity:	> 80% as determined by SDS-PAGE and Coomassie blue staining
Concentration:	>0.05 µg/µL as determined by microplate BCA method
Labeling Method:	Labeled with [U- ¹³ C ₆ , ¹⁵ N ₄]-L-Arginine and [U- ¹³ C ₆ , ¹⁵ N ₂]-L-Lysine
Buffer:	25 mM Tris-HCl, 100 mM glycine, pH 7.3
Storage:	Store at -80°C. Avoid repeated freeze-thaw cycles.
Stability:	Stable for 3 months from receipt of products under proper storage and handling conditions.
RefSeq:	NP_001946
RefSeq Size:	2112
RefSeq ORF:	636
Synonyms:	ARCND3; ET1; HDLCQ7; PPET1; QME
Locus ID:	1906
UniProt ID:	P05305 , Q6FH53



[View online »](#)

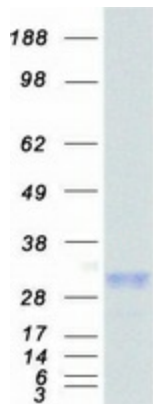
Cytogenetics: 6p24.1

Summary: This gene encodes a preproprotein that is proteolytically processed to generate a secreted peptide that belongs to the endothelin/sarafotoxin family. This peptide is a potent vasoconstrictor and its cognate receptors are therapeutic targets in the treatment of pulmonary arterial hypertension. Aberrant expression of this gene may promote tumorigenesis. Alternative splicing results in multiple transcript variants. [provided by RefSeq, Oct 2015]

Protein Families: Druggable Genome, Secreted Protein

Protein Pathways: Melanogenesis

Product images:



Coomassie blue staining of purified EDN1 protein (Cat# [TP302217]). The protein was produced from HEK293T cells transfected with EDN1 cDNA clone (Cat# [RC202217]) using MegaTran 2.0 (Cat# [TT210002]).