

Product datasheet for PH302216

EMP3 (NM_001425) Human Mass Spec Standard

Product data:

Product Type:	Mass Spec Standards
Description:	EMP3 MS Standard C13 and N15-labeled recombinant protein (NP_001416)
Species:	Human
Expression Host:	HEK293
Expression cDNA Clone or AA Sequence:	RC202216
Predicted MW:	18.4 kDa
Protein Sequence:	>RC202216 protein sequence Red=Cloning site Green=Tags(s) MSLLLLVVSALHILILILLFVATLDKSWWTLPGKESLNLWYDCTWNNDTKTWACSNVSENGWLKAVQVLM VLSLILCCLSFILFMFQLYTMRRGGLFYATGLCQLCTSVAVFTGALIYAIHAEEILEKHPRGGSFGYCFA LAWVAFPLALVSGIYIHLRKRE TRTRPLEQKLI SEEDLAANDILDYKDDDDKV
Tag:	C-Myc/DDK
Purity:	> 80% as determined by SDS-PAGE and Coomassie blue staining
Concentration:	>0.05 µg/µL as determined by microplate BCA method
Labeling Method:	Labeled with [U- 13C6, 15N4]-L-Arginine and [U- 13C6, 15N2]-L-Lysine
Buffer:	25 mM Tris-HCl, 100 mM glycine, pH 7.3
Storage:	Store at -80°C. Avoid repeated freeze-thaw cycles.
Stability:	Stable for 3 months from receipt of products under proper storage and handling conditions.
RefSeq:	NP_001416
RefSeq Size:	850
RefSeq ORF:	489
Synonyms:	YMP
Locus ID:	2014
UniProt ID:	P54852 , A0A024QZF8



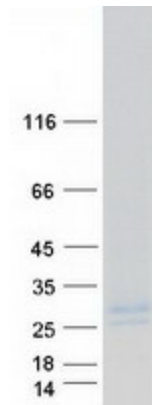
[View online »](#)

Cytogenetics: 19q13.33

Summary: The protein encoded by this gene belongs to the PMP-22/EMP/MP20 family of proteins. The protein contains four transmembrane domains and two N-linked glycosylation sites. It is thought to be involved in cell proliferation, cell-cell interactions and function as a tumor suppressor. Alternative splicing results in multiple transcript variants. [provided by RefSeq, Sep 2015]

Protein Families: Transmembrane

Product images:



Coomassie blue staining of purified EMP3 protein (Cat# [TP302216]). The protein was produced from HEK293T cells transfected with EMP3 cDNA clone (Cat# [RC202216]) using MegaTran 2.0 (Cat# [TT210002]).