

## Product datasheet for PH302203

### MAP1 (MOAP1) (NM\_022151) Human Mass Spec Standard

#### Product data:

Product Type:	Mass Spec Standards
Description:	MOAP1 MS Standard C13 and N15-labeled recombinant protein (NP_071434)
Species:	Human
Expression Host:	HEK293
Expression cDNA Clone or AA Sequence:	RC202203
Predicted MW:	39.5 kDa
Protein Sequence:	>RC202203 protein sequence Red=Cloning site Green=Tags(s)

MTLRLLLEDWCRGMDMNP RKALLIAGISQSCSVAEIEEALQAGLAPLGEYRLLGRMFRRDENRKVALVGLT  
AETSHALVPKEIPGKGGIWRVIFKPPDPDNTFLSRLNEFLAGEGMTVGELSRALGHENGSLDPEQGMPIE  
MWAPMLAQALEALQPALQCLKYKLRVFSGRESPEPGEIEFGRWMFHTTQMIKAWQVPDVEKRRRLLES  
RGPALDVIRVLKINNPLITVDECLQALEEVFGVTDNPRELQVKYLTQYQKDEEKL SAYVLRLEPLLQKLV  
QRGAIERDAVNQARLDQVIAGAVHKTIRRELNLPEDGPAGFLQLLVLIKDYEAEEEEALLQAILEGNF  
T

TRTRPLEQKLI SEEDLAANDILDYKDDDDKV

Tag:	C-Myc/DDK
Purity:	> 80% as determined by SDS-PAGE and Coomassie blue staining
Concentration:	>0.05 µg/µL as determined by microplate BCA method
Labeling Method:	Labeled with [U- <sup>13</sup> C <sub>6</sub> , <sup>15</sup> N <sub>4</sub> ]-L-Arginine and [U- <sup>13</sup> C <sub>6</sub> , <sup>15</sup> N <sub>2</sub> ]-L-Lysine
Buffer:	25 mM Tris-HCl, 100 mM glycine, pH 7.3
Storage:	Store at -80°C. Avoid repeated freeze-thaw cycles.
Stability:	Stable for 3 months from receipt of products under proper storage and handling conditions.
RefSeq:	<a href="#">NP_071434</a>
RefSeq Size:	2435
RefSeq ORF:	1053
Synonyms:	MAP-1; PNMA4
Locus ID:	64112



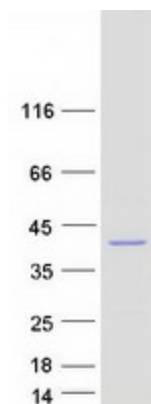
[View online »](#)

UniProt ID: [Q96BY2](#)

Cytogenetics: 14q32.12

Summary: The protein encoded by this gene was identified by its interaction with apoptosis regulator BAX protein. This protein contains a Bcl-2 homology 3 (BH3)-like motif, which is required for the association with BAX. When overexpressed, this gene has been shown to mediate caspase-dependent apoptosis. [provided by RefSeq, Jul 2008]

### Product images:



Coomassie blue staining of purified MOAP1 protein (Cat# [TP302203]). The protein was produced from HEK293T cells transfected with MOAP1 cDNA clone (Cat# [RC202203]) using MegaTran 2.0 (Cat# [TT210002]).