

Product datasheet for PH302198

Butyrylcholinesterase (BCHE) (NM_000055) Human Mass Spec Standard

Product data:

Product Type:	Mass Spec Standards
Description:	BCHE MS Standard C13 and N15-labeled recombinant protein (NP_000046)
Species:	Human
Expression Host:	HEK293
Expression cDNA Clone or AA Sequence:	RC202198
Predicted MW:	68.4 kDa
Protein Sequence:	>RC202198 protein sequence Red=Cloning site Green=Tags(s)

MHSKVTIICIRFLFWLLLCMLIGKSHTEDDIIATKNGKVRGMNLTVFGGTVTAF LGIPYAQPPLGRLR
FKKPQSLTKWSDIWNATKYANSCCQNIQSFPGFHGSEMWNPTDLSEDCLYLNWVIPAPKPKNATVLIW
IYGGGFQTGTSSLHVYDGKFLARVERVIVSMNYRVGALGFLALPGNPEAPGNMGLFDQQLALQWVQKNI
AAFGGNPKSVTLFGESAGAASVSLHLLSPGSHSLFTRAILQSGSFNAPWAVTSLYEARNRTLNLAKLTGC
SRENETEIIKCLRNDPQEILLNEAFVVPYGTPLSVNFGPTVDGDFLTDMPDILLELGQFKKTQILVGVN
KDEGTAFLVYGAPGFSKDNNSIITRKEFQEGLIKIFPGVSEFGKESILFHYTDWVDDQRPENYREALGDV
VGDYNFICPALEFTKKFSEWGNAFFYYFEHRSSKLPWPEWGMVHGYEIEFVFGPLERRDNYTKAEEI
LSRSIVKRWANFAKYGNPNETQNNSTSWPVFKSTEQKYLTLNTESTRIMTKLRAQQCRFWTSFFPKVLEM
TGNIDEAEWEWKAGFHRWNNYMDWKNQFNDYTSKKESC VGL

TRTRPLEQKLI SEEDLAANDILDYKDDDDKV

Tag:	C-Myc/DDK
Purity:	> 80% as determined by SDS-PAGE and Coomassie blue staining
Concentration:	>0.05 µg/µL as determined by microplate BCA method
Labeling Method:	Labeled with [U- ¹³ C ₆ , ¹⁵ N ₄]-L-Arginine and [U- ¹³ C ₆ , ¹⁵ N ₂]-L-Lysine
Buffer:	25 mM Tris-HCl, 100 mM glycine, pH 7.3
Storage:	Store at -80°C. Avoid repeated freeze-thaw cycles.
Stability:	Stable for 3 months from receipt of products under proper storage and handling conditions.
RefSeq:	NP_000046
RefSeq Size:	2461
RefSeq ORF:	1806



[View online »](#)

Synonyms: BCHE; CHE1; CHE2; E1

Locus ID: 590

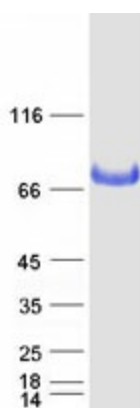
UniProt ID: [P06276](#)

Cytogenetics: 3q26.1

Summary: This gene encodes a cholinesterase enzyme and member of the type-B carboxylesterase/lipase family of proteins. The encoded enzyme exhibits broad substrate specificity and is involved in the detoxification of poisons including organophosphate nerve agents and pesticides, and the metabolism of drugs including cocaine, heroin and aspirin. Humans homozygous for certain mutations in this gene exhibit prolonged apnea after administration of the muscle relaxant succinylcholine. [provided by RefSeq, Jul 2016]

Protein Families: Druggable Genome, Transmembrane

Product images:



Coomassie blue staining of purified BCHE protein (Cat# [TP302198]). The protein was produced from HEK293T cells transfected with BCHE cDNA clone (Cat# [RC202198]) using MegaTran 2.0 (Cat# [TT210002]).