

Product datasheet for PH302195

Cystathionase (CTH) (NM_001902) Human Mass Spec Standard

Product data:

Product Type:	Mass Spec Standards
Description:	CTH MS Standard C13 and N15-labeled recombinant protein (NP_001893)
Species:	Human
Expression Host:	HEK293
Expression cDNA Clone or AA Sequence:	RC202195
Predicted MW:	44.5 kDa
Protein Sequence:	>RC202195 protein sequence Red=Cloning site Green=Tags(s)
	<p>MQEKDASSQGFLPHFQHFATQAIHVGQDPEQWTSRAVVPPISLSTTFKQGAPGQHSGFYRSRSGNPTRNC LEKAVAALDGAKYCLAFASGLAATVTITHLLKAGDQIICMDDVYGGTNRVFRQVASEFGLKISFVDCSKI KLLLEAAITPETKLVWIETPTNPTQKVIDIEGCAHIVHKHGDIIILVVDNTFMSPYFQRPLALGADISMYS TKYMNHSDVVMGLVSVNCESLHNRLRFLQNSLGAVPSPIDCYLCNRGLKTLHVRMEKHFKNMVAQFL ESNPWVEKVIYPGLPSPQHELVKRQCTGCTGMVTFYIKGTLQHAEIFLKNLKLFTLAESLGGFESLAEL PAIMTHASVLKNDRDVLGISDTLIRLSVGLEDEEDLLEDLDQALKAAHPPSGSHS</p> <p>TRTRPLEQKLISEEDLAANDILDYKDDDDKV</p>
Tag:	C-Myc/DDK
Purity:	> 80% as determined by SDS-PAGE and Coomassie blue staining
Concentration:	>0.05 µg/µL as determined by microplate BCA method
Labeling Method:	Labeled with [U- ¹³ C ₆ , ¹⁵ N ₄]-L-Arginine and [U- ¹³ C ₆ , ¹⁵ N ₂]-L-Lysine
Buffer:	25 mM Tris-HCl, 100 mM glycine, pH 7.3
Storage:	Store at -80°C. Avoid repeated freeze-thaw cycles.
Stability:	Stable for 3 months from receipt of products under proper storage and handling conditions.
RefSeq:	NP_001893
RefSeq Size:	2140
RefSeq ORF:	1215
Locus ID:	1491
UniProt ID:	P32929



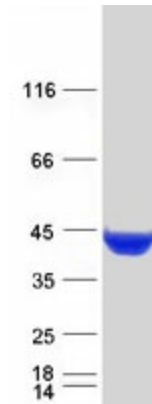
[View online »](#)

Cytogenetics: 1p31.1

Summary: This gene encodes a cytoplasmic enzyme in the trans-sulfuration pathway that converts cystathione derived from methionine into cysteine. Glutathione synthesis in the liver is dependent upon the availability of cysteine. Mutations in this gene cause cystathioninuria. Alternative splicing of this gene results in three transcript variants encoding different isoforms. [provided by RefSeq, Jun 2010]

Protein Pathways: Cysteine and methionine metabolism, Glycine, serine and threonine metabolism, Metabolic pathways, Nitrogen metabolism, Selenoamino acid metabolism

Product images:



Coomassie blue staining of purified CTH protein (Cat# [TP302195]). The protein was produced from HEK293T cells transfected with CTH cDNA clone (Cat# [RC202195]) using MegaTran 2.0 (Cat# [TT210002]).