

Product datasheet for PH302186

SH3KBP1 (NM_031892) Human Mass Spec Standard

Product data:

Product Type:	Mass Spec Standards
Description:	SH3KBP1 MS Standard C13 and N15-labeled recombinant protein (NP_114098)
Species:	Human
Expression Host:	HEK293
Expression cDNA Clone or AA Sequence:	RC202186
Predicted MW:	72.9 kDa
Protein Sequence:	>RC202186 representing NM_031892 Red=Cloning site Green=Tags(s)

MVEAIVEFDYQAQHDEL TISVGEIITNIRKEDGGWEGQINGRRGLFPDNFVREIKKEMKDP LTNKAP
EKPLHEVPSGNLLSSETILRTNKRGERRRRCQVAFSYLPQNDDLELKVGDIEVVGEEVVEEGWEGVL
NGKTGMFSPNFIKELSGESDELGISQDEQLSKSSLRETTGSESDGGSSSTKSEGANGTVATAAIQPKKV
KGVGFGDIFKDKPIKLRPRSEIENDFLPVEKTIGKKLPATTATPDSSKTEMDSRTKSKDYCKVIFPYEA
QNDELTIKEGDIVTLINKDCIDVGWEGELNGRRGVFPDNFVKLLPPDFEKEGNRPKPPPPSAPVIKQ
GAGTTERKHEIKKIPPERPEMLPNRTEEKERPEREPLDLQKPSVPAIPPKPRPPKTNLSRPGALPPR
RPERPVGPLTHTRGDSPKIDLAGSSLGILDKDLSDRSNDIDLEGFDSVVSSTEKLSHPTTSRPKATGRR
PPSQSLTSSSLSSPDIFDSPSPEEDKEEHI SLAHRGVDASKKTSKTVTISQVSDNKASLPPKPGTMAAGG
GGPAPLSSAVPSPLSSSLGTAGHRANSPSLFGTEGPKMEPAASSQA AVEELRTQVRELRSIETMKDQQ
KREIKQLLSELDEEKIRLRLQMEVNDIKKALQSK

TRRLEQKLI SEEDLAANDILDYKDDDDKV

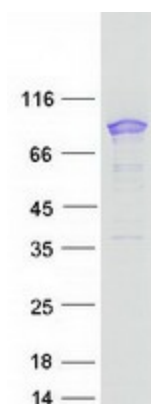
Tag:	C-Myc/DDK
Purity:	> 80% as determined by SDS-PAGE and Coomassie blue staining
Concentration:	>0.05 µg/µL as determined by microplate BCA method
Labeling Method:	Labeled with [U- 13C6, 15N4]-L-Arginine and [U- 13C6, 15N2]-L-Lysine
Buffer:	25 mM Tris-HCl, 100 mM glycine, pH 7.3
Storage:	Store at -80°C. Avoid repeated freeze-thaw cycles.
Stability:	Stable for 3 months from receipt of products under proper storage and handling conditions.
RefSeq:	<u>NP_114098</u>
RefSeq Size:	3348



[View online »](#)

RefSeq ORF:	1995
Synonyms:	AGMX2; CD2BP3; CIN85; GIG10; HSB-1; HSB1; IMD61; MIG18
Locus ID:	30011
UniProt ID:	Q96B97 , Q5JPT6
Cytogenetics:	Xp22.12
Summary:	This gene encodes an adapter protein that contains one or more N-terminal Src homology domains, a proline rich region and a C-terminal coiled-coil domain. The encoded protein facilitates protein-protein interactions and has been implicated in numerous cellular processes including apoptosis, cytoskeletal rearrangement, cell adhesion and in the regulation of clathrin-dependent endocytosis. Alternate splicing results in multiple transcript variants encoding distinct isoforms. [provided by RefSeq, Jul 2017]
Protein Families:	Druggable Genome
Protein Pathways:	Endocytosis

Product images:



Coomassie blue staining of purified SH3KBP1 protein (Cat# [TP302186]). The protein was produced from HEK293T cells transfected with SH3KBP1 cDNA clone (Cat# [RC202186]) using MegaTran 2.0 (Cat# [TT210002]).