

Product datasheet for PH302183

RPIA (NM_144563) Human Mass Spec Standard

Product data:

Product Type:	Mass Spec Standards
Description:	RPIA MS Standard C13 and N15-labeled recombinant protein (NP_653164)
Species:	Human
Expression Host:	HEK293
Expression cDNA Clone or AA Sequence:	RC202183
Predicted MW:	33.1 kDa
Protein Sequence:	>RC202183 representing NM_144563 Red=Cloning site Green=Tags(s) MQRPGPFSTLYGRVLAPLPGRAGGAASGGGNSWDLPGSHVRLPGRAQSGTRGGAGNTSTSCGDSNSICP APSTMSKAEAEAKKLAGRAAVENHVRNNQVLGIGSGSTIVHAVQRIAERVKQENLNLVCIPTSFQARQLIL QYGLTSLDLRHPIDLAIDGADEVADLNLIKGGGGCLTQEKIVAGYASRFIVIAADFRKDSKNLGDQWH KGIPIEVIPMAYVPVSRVAVSQKFGGVVELRMAVKNAGPVVTDNGNFILDWKFDRVHKWSEVNTAIKMIPG VVDTGLFINMAERVYFGMQDGSVNMREKPFK TRTRPLEQKLISEEDLAANDILDYKDDDDKV
Tag:	C-Myc/DDK
Purity:	> 80% as determined by SDS-PAGE and Coomassie blue staining
Concentration:	>0.05 µg/µL as determined by microplate BCA method
Labeling Method:	Labeled with [U- ¹³ C ₆ , ¹⁵ N ₄]-L-Arginine and [U- ¹³ C ₆ , ¹⁵ N ₂]-L-Lysine
Buffer:	25 mM Tris-HCl, 100 mM glycine, pH 7.3
Storage:	Store at -80°C. Avoid repeated freeze-thaw cycles.
Stability:	Stable for 3 months from receipt of products under proper storage and handling conditions.
RefSeq:	NP_653164
RefSeq Size:	1834
RefSeq ORF:	933
Synonyms:	RPI; RPIAD
Locus ID:	22934



[View online »](#)

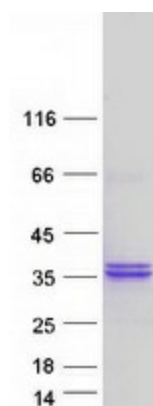
UniProt ID: [P49247](#)

Cytogenetics: 2p11.2

Summary: The protein encoded by this gene is an enzyme, which catalyzes the reversible conversion between ribose-5-phosphate and ribulose-5-phosphate in the pentose-phosphate pathway. This gene is highly conserved in most organisms. The enzyme plays an essential role in the carbohydrate metabolism. Mutations in this gene cause ribose 5-phosphate isomerase deficiency. A pseudogene is found on chromosome 18. [provided by RefSeq, Mar 2010]

Protein Pathways: Metabolic pathways, Pentose phosphate pathway

Product images:



Coomassie blue staining of purified RPIA protein (Cat# [TP302183]). The protein was produced from HEK293T cells transfected with RPIA cDNA clone (Cat# [RC202183]) using MegaTran 2.0 (Cat# [TT210002]).