

Product datasheet for PH302178

RAB39B (NM_171998) Human Mass Spec Standard

Product data:

Product Type:	Mass Spec Standards
Description:	RAB39B MS Standard C13 and N15-labeled recombinant protein (NP_741995)
Species:	Human
Expression Host:	HEK293
Expression cDNA Clone or AA Sequence:	RC202178
Predicted MW:	24.6 kDa
Protein Sequence:	>RC202178 protein sequence Red =Cloning site Green =Tags(s) MEAIWL YQFRLIVIGDSTVGK SCLIRRFTEGRFAQVSDPTVGVDFFSRLVEIEPGKRIKLIWDTAGQER FRSITRAYRNSVGGLLLF DITNRRSFQNVHEWLEETKVHVQPYQIVFVLVGHKCDLDTQRQVTRHEAEK LAAAYGMKYIETSARDAINVEKAFTDLTRDIYELVKRGEITIQEGWEGVKSGFV PNVVHSSEEVVK SERR CLC TR TRPLEQ KL ISEEDLAANDILDYKDDDDK V
Tag:	C-Myc/DDK
Purity:	> 80% as determined by SDS-PAGE and Coomassie blue staining
Concentration:	>0.05 µg/µL as determined by microplate BCA method
Labeling Method:	Labeled with [U- ¹³ C ₆ , ¹⁵ N ₄]-L-Arginine and [U- ¹³ C ₆ , ¹⁵ N ₂]-L-Lysine
Buffer:	25 mM Tris-HCl, 100 mM glycine, pH 7.3
Storage:	Store at -80°C. Avoid repeated freeze-thaw cycles.
Stability:	Stable for 3 months from receipt of products under proper storage and handling conditions.
RefSeq:	NP_741995
RefSeq Size:	3512
RefSeq ORF:	639
Synonyms:	BGMR; MRX72; WSMN; WSN
Locus ID:	116442
UniProt ID:	Q96DA2



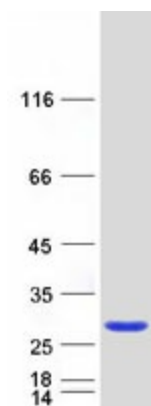
[View online »](#)

Cytogenetics: Xq28

Summary: This gene encodes a member of the Rab family of proteins. Rab proteins are small GTPases that are involved in vesicular trafficking. Mutations in this gene are associated with X-linked cognitive disability. [provided by RefSeq, Aug 2013]

Protein Families: Druggable Genome

Product images:



Coomassie blue staining of purified RAB39B protein (Cat# [TP302178]). The protein was produced from HEK293T cells transfected with RAB39B cDNA clone (Cat# [RC202178]) using MegaTran 2.0 (Cat# [TT210002]).