

## Product datasheet for PH302175

### Membrin (GOSR2) (NM\_004287) Human Mass Spec Standard

#### Product data:

Product Type:	Mass Spec Standards
Description:	GOSR2 MS Standard C13 and N15-labeled recombinant protein (NP_004278)
Species:	Human
Expression Host:	HEK293
Expression cDNA Clone or AA Sequence:	RC202175
Predicted MW:	24.8 kDa
Protein Sequence:	>RC202175 protein sequence <b>Red</b> =Cloning site <b>Green</b> =Tags(s)  MDPLFQQTHKQVHEIQSCMGRLETADKQSVHIVENEIQASIDQIFSRLERLEILSSKEPPNKRQNARLRV DQLKYDVQHLQTALRNFQHRHAREQQRQREELLSRFTTNDSDTTIPMDESLQFNSSLQKVHNGMDDL ILDGHNILDGLRTQRLTLKGTQKKILDIANMLGLSNTVMRLIEKRAFQDKYFMIGMMLLTCVVMFLVVQY LT  <b>TRTRPLEQKLISEEDLAANDILDYKDDDDKV</b>
Tag:	C-Myc/DDK
Purity:	> 80% as determined by SDS-PAGE and Coomassie blue staining
Concentration:	>0.05 µg/µL as determined by microplate BCA method
Labeling Method:	Labeled with [U- <sup>13</sup> C <sub>6</sub> , <sup>15</sup> N <sub>4</sub> ]-L-Arginine and [U- <sup>13</sup> C <sub>6</sub> , <sup>15</sup> N <sub>2</sub> ]-L-Lysine
Buffer:	25 mM Tris-HCl, 100 mM glycine, pH 7.3
Storage:	Store at -80°C. Avoid repeated freeze-thaw cycles.
Stability:	Stable for 3 months from receipt of products under proper storage and handling conditions.
RefSeq:	<a href="#">NP_004278</a>
RefSeq Size:	3319
RefSeq ORF:	636
Synonyms:	Bos1; EPM6; GS27
Locus ID:	9570
UniProt ID:	<a href="#">O14653</a>



[View online »](#)

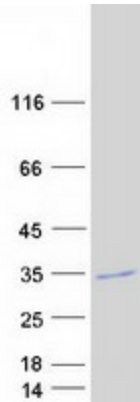
**Cytogenetics:** 17q21.32

**Summary:** This gene encodes a trafficking membrane protein which transports proteins among the medial- and trans-Golgi compartments. Due to its chromosomal location and trafficking function, this gene may be involved in familial essential hypertension. [provided by RefSeq, Mar 2016]

**Protein Families:** Druggable Genome, Transmembrane

**Protein Pathways:** SNARE interactions in vesicular transport

### Product images:



Coomassie blue staining of purified GOSR2 protein (Cat# [TP302175]). The protein was produced from HEK293T cells transfected with GOSR2 cDNA clone (Cat# [RC202175]) using MegaTran 2.0 (Cat# [TT210002]).