

Product datasheet for PH302167

GCIP interacting protein p29 (SYF2) (NM_015484) Human Mass Spec Standard

Product data:

Product Type:	Mass Spec Standards
Description:	SYF2 MS Standard C13 and N15-labeled recombinant protein (NP_056299)
Species:	Human
Expression Host:	HEK293
Expression cDNA Clone or AA Sequence:	RC202167
Predicted MW:	28.7 kDa
Protein Sequence:	>RC202167 protein sequence Red=Cloning site Green=Tags(s) MAAIAASEVLVDSAEEGSLAAAAELAAQKREQLRKFRELHLMRNEARKLNHQEVVEEDKRLKLPANWEA KKARLEWELKEEEKKKECAARGDYEKVKLLEISAEDAERWERKKRKNPDLGFSDYAAAQLRQYHRLTK QIKPDMETYERLREKHGEEFFPTSNSLLHGTHVPSTEEIDRMVIDLEKQIEKRDKYSRRRPYNDADIDY INERNAKFNKKAERFYGKYTAEIKQNLERGTA TRTRPLEQKLISEEDLAANDILDYKDDDDKV
Tag:	C-Myc/DDK
Purity:	> 80% as determined by SDS-PAGE and Coomassie blue staining
Concentration:	>0.05 µg/µL as determined by microplate BCA method
Labeling Method:	Labeled with [U- ¹³ C ₆ , ¹⁵ N ₄]-L-Arginine and [U- ¹³ C ₆ , ¹⁵ N ₂]-L-Lysine
Buffer:	25 mM Tris-HCl, 100 mM glycine, pH 7.3
Storage:	Store at -80°C. Avoid repeated freeze-thaw cycles.
Stability:	Stable for 3 months from receipt of products under proper storage and handling conditions.
RefSeq:	NP_056299
RefSeq Size:	1777
RefSeq ORF:	729
Synonyms:	CBPIN; fSAP29; NTC31; P29
Locus ID:	25949
UniProt ID:	O95926



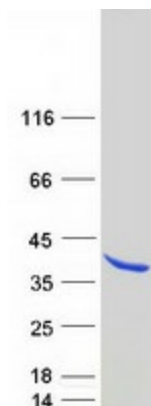
[View online »](#)

Cytogenetics: 1p36.11

Summary: This gene encodes a nuclear protein that interacts with cyclin D-type binding-protein 1, which is thought to be a cell cycle regulator at the G1/S transition. Alternate transcriptional splice variants, encoding different isoforms, have been characterized. [provided by RefSeq, Jul 2008]

Protein Pathways: Spliceosome

Product images:



Coomassie blue staining of purified SYF2 protein (Cat# [TP302167]). The protein was produced from HEK293T cells transfected with SYF2 cDNA clone (Cat# [RC202167]) using MegaTran 2.0 (Cat# [TT210002]).