

Product datasheet for PH302159

REEP6 (NM_138393) Human Mass Spec Standard

Product data:

Product Type:	Mass Spec Standards
Description:	REEP6 MS Standard C13 and N15-labeled recombinant protein (NP_612402)
Species:	Human
Expression Host:	HEK293
Expression cDNA Clone or AA Sequence:	RC202159
Predicted MW:	20.7 kDa
Protein Sequence:	>RC202159 protein sequence Red =Cloning site Green =Tags(s) MDGLRQRVEHFLEQRNLVTEVLGALEAKTGVEKRYLAAGAVTLLSLYLLFGYGASLLCNLIGFVYPAYAS IKAIESPSKDDDTYWLTYWVYALFGLAEFFSDLLLWFPFYVYGKCAFLLFCMAPRPWNGALMLYQRVV RPLFLRHHGAVDRIMNDLSGRALDAAAGITRNVKPSQTPQPKDK TR TRPLEQKLI SEEDLAANDILDYKDDDDKV
Tag:	C-Myc/DDK
Purity:	> 80% as determined by SDS-PAGE and Coomassie blue staining
Concentration:	>0.05 µg/µL as determined by microplate BCA method
Labeling Method:	Labeled with [U- ¹³ C ₆ , ¹⁵ N ₄]-L-Arginine and [U- ¹³ C ₆ , ¹⁵ N ₂]-L-Lysine
Buffer:	25 mM Tris-HCl, 100 mM glycine, pH 7.3
Storage:	Store at -80°C. Avoid repeated freeze-thaw cycles.
Stability:	Stable for 3 months from receipt of products under proper storage and handling conditions.
RefSeq:	NP_612402
RefSeq Size:	1393
RefSeq ORF:	552
Synonyms:	C19orf32; DP1L1; REEP6.1; REEP6.2; RP77; TB2L1; Yip2f
Locus ID:	92840
UniProt ID:	Q96HR9 , A0A1L5BXV2



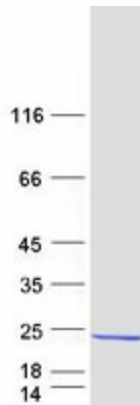
[View online »](#)

Cytogenetics: 19p13.3

Summary: The protein encoded by this gene may be involved in the transport of receptors from the endoplasmic reticulum (ER) to the cell surface. The encoded protein may also play a role in regulating ER membrane structure. This gene is required for the proper development of retinal rods and photoreceptors, with defects in this gene being associated with retinitis pigmentosa 77. [provided by RefSeq, May 2017]

Protein Families: Druggable Genome, Transmembrane

Product images:



Coomassie blue staining of purified REEP6 protein (Cat# [TP302159]). The protein was produced from HEK293T cells transfected with REEP6 cDNA clone (Cat# [RC202159]) using MegaTran 2.0 (Cat# [TT210002]).