

Product datasheet for PH302153

FKBPL (NM_022110) Human Mass Spec Standard

Product data:

Product Type:	Mass Spec Standards
Description:	FKBPL MS Standard C13 and N15-labeled recombinant protein (NP_071393)
Species:	Human
Expression Host:	HEK293
Expression cDNA Clone or AA Sequence:	RC202153
Predicted MW:	38.2 kDa
Protein Sequence:	>RC202153 protein sequence Red=Cloning site Green=Tags(s)

METPPVNTIGEKDTSQPQQEWKLNRENLDVSIQIRQQPRDPPTETLELEVSPDPASQILEHTQGAEKLV
AELEGD SHKSHGSTSQMPEALQASDLWYCPDGSFVKKI VIRGHGLDKPKLGSCCRVLALGFPGSGPPEG
WTELTMGVGPWREETWGELIEKCLESMCQGEEAELQLPGHSGPPVRLTLASFTQGRDSWELETSEKEALA
REERARGTELFRAGNPEGAARCYGRALRLLLTLPPPPTVLANLAACQLLLGQPQLAAQSCDRVLE
REPGHLKALYRRGVAQAALGNLEKATADLKKVLAIDPKNRAAQEELGKVVIQGNQDAGLAQGLRKMFG

TRTRPLEQKLI SEEDLAANDILDYKDDDDKV

Tag:	C-Myc/DDK
Purity:	> 80% as determined by SDS-PAGE and Coomassie blue staining
Concentration:	>0.05 µg/µL as determined by microplate BCA method
Labeling Method:	Labeled with [U- ¹³ C ₆ , ¹⁵ N ₄]-L-Arginine and [U- ¹³ C ₆ , ¹⁵ N ₂]-L-Lysine
Buffer:	25 mM Tris-HCl, 100 mM glycine, pH 7.3
Storage:	Store at -80°C. Avoid repeated freeze-thaw cycles.
Stability:	Stable for 3 months from receipt of products under proper storage and handling conditions.
RefSeq:	<u>NP_071393</u>
RefSeq Size:	1357
RefSeq ORF:	1047
Synonyms:	DIR1; NG7; WISP39
Locus ID:	63943



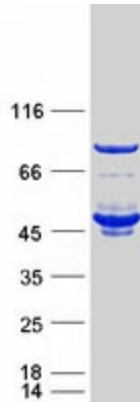
[View online »](#)

UniProt ID: [Q9UIM3](#), [A0A024RCQ6](#)

Cytogenetics: 6p21.32

Summary: The protein encoded by this gene has similarity to the immunophilin protein family, which play a role in immunoregulation and basic cellular processes involving protein folding and trafficking. The encoded protein is thought to have a potential role in the induced radioresistance. Also it appears to have some involvement in the control of the cell cycle. [provided by RefSeq, Jul 2008]

Product images:



Coomassie blue staining of purified FKBPL protein (Cat# [TP302153]). The protein was produced from HEK293T cells transfected with FKBPL cDNA clone (Cat# [RC202153]) using MegaTran 2.0 (Cat# [TT210002]).