

Product datasheet for PH302139

Granulin (GRN) (NM_002087) Human Mass Spec Standard

Product data:

Product Type:	Mass Spec Standards
Description:	GRN MS Standard C13 and N15-labeled recombinant protein (NP_002078)
Species:	Human
Expression Host:	HEK293
Expression cDNA Clone or AA Sequence:	RC202139
Predicted MW:	63.5 kDa
Protein Sequence:	>RC202139 protein sequence Red =Cloning site Green =Tags(s)

MWTLVSWVALTAGLVAGTRCPDGQFCPVACCLDPGGASYSCCRPLLDKWPTTLSRHLGGPCQVDAHCSAG
 HSCIFTVSGTSSCCPFPEAVACGDGHHCCPRGFHCSADGRSCFQSGNNSVGAIQCPDSQFECPDFSTCC
 VMVDGSWGCCPMPQASCCEDRVHCCPHGAFCDLVHTRCITPTGTHPLAKKLPARTNRAVALSSVMCPD
 ARSRCPDGGSTCCCLPSGKYGCCPMPNATCCSDHLHCCPQDTVCDLIQSKCLSKENATTDLLTKLPAHTVG
 DVKCDMEVSCPDGYTCCRLQSGAWGCCPFTQAVCCEDHIHCCPAGFTCDTQKGTCEQGPHQVPWMEKAPA
 HLSLPDPQALKRDVPCDNVSSCPSSDTCCQLTSGEWGCCPIPEAVCCSDHQHCCPQGYTCVAEGQCQRGS
 EIVAGLEKMPARRASLSHPRDIGCDQHTSCPVGQTCCPSLGGSWACCQLPHAVCCEDRQHCCPAGYTCNV
 KARSCEKEVVSAPATFLARSPHVGVKDVCEGEGHFCNDQTCCRDNQGWACCPYRQGVCCADRRHCCP
 AGFRCAARGTKCLRREAPRWDAPLRDPALRQLL

TRTRPLEQKLISEEDLAANDILDYKDDDDKV

Tag:	C-Myc/DDK
Purity:	> 80% as determined by SDS-PAGE and Coomassie blue staining
Concentration:	>0.05 µg/µL as determined by microplate BCA method
Labeling Method:	Labeled with [U- ¹³ C ₆ , ¹⁵ N ₄]-L-Arginine and [U- ¹³ C ₆ , ¹⁵ N ₂]-L-Lysine
Buffer:	25 mM Tris-HCl, 100 mM glycine, pH 7.3
Storage:	Store at -80°C. Avoid repeated freeze-thaw cycles.
Stability:	Stable for 3 months from receipt of products under proper storage and handling conditions.
RefSeq:	<u>NP_002078</u>
RefSeq Size:	2323
RefSeq ORF:	1779


[View online »](#)

Synonyms: CLN11; GEP; GP88; PCDGF; PEPI; PGRN

Locus ID: 2896

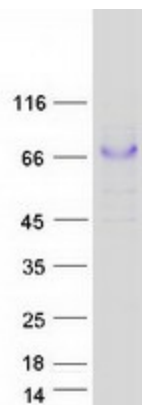
UniProt ID: [P28799](#)

Cytogenetics: 17q21.31

Summary: Granulins are a family of secreted, glycosylated peptides that are cleaved from a single precursor protein with 7.5 repeats of a highly conserved 12-cysteine granulin/epithelin motif. The 88 kDa precursor protein, progranulin, is also called proepithelin and PC cell-derived growth factor. Cleavage of the signal peptide produces mature granulin which can be further cleaved into a variety of active, 6 kDa peptides. These smaller cleavage products are named granulin A, granulin B, granulin C, etc. Epithelins 1 and 2 are synonymous with granulins A and B, respectively. Both the peptides and intact granulin protein regulate cell growth. However, different members of the granulin protein family may act as inhibitors, stimulators, or have dual actions on cell growth. Granulin family members are important in normal development, wound healing, and tumorigenesis. [provided by RefSeq, Jul 2008]

Protein Families: Druggable Genome, Secreted Protein

Product images:



Coomassie blue staining of purified GRN protein (Cat# [TP302139]). The protein was produced from HEK293T cells transfected with GRN cDNA clone (Cat# [RC202139]) using MegaTran 2.0 (Cat# [TT210002]).