

Product datasheet for PH302138

SERPINB1 (NM_030666) Human Mass Spec Standard

Product data:

Product Type:	Mass Spec Standards
Description:	SERPINB1 MS Standard C13 and N15-labeled recombinant protein (NP_109591)
Species:	Human
Expression Host:	HEK293
Expression cDNA Clone or AA Sequence:	RC202138
Predicted MW:	42.7 kDa
Protein Sequence:	>RC202138 protein sequence Red=Cloning site Green=Tags(s)
	MEQLSSANTRFALDLFLALSENNPAGNIFISPFSSAMAMVFLGTRGNTAAQLSKTFHFNTVEEVHSRF QSLNADINKRGASYILKLANRLYGKTYNFLPEFLVSTQKTYGADLASVDFQHASEDARKTINQWVKGQT EGKIPELLASGMVDNMTKLVLVNAIYFKGNWKDKFMKEATTNAPFRLNKKDRKTVKMMYQKKKFAYGYIE DLKCRVLELPYQGEELSMVILLPDDIEDESTGLKIEEQLTLEKLHEWTKPENLDFIEVNVSLPRFKLEE SYTLNSDLARLGVQDLFNSSKADLSGMSGARDIFISKIVHKSFVEVNEEGTEAAAATAGIATFCMLMPEE NFTADHPFLFFIRHNSSGSILFLGRFSSP
	TRTRPLEQKLISEEDLAANDILDYKDDDDKV
Tag:	C-Myc/DDK
Purity:	> 80% as determined by SDS-PAGE and Coomassie blue staining
Concentration:	>0.05 µg/µL as determined by microplate BCA method
Labeling Method:	Labeled with [U- ¹³ C ₆ , ¹⁵ N ₄]-L-Arginine and [U- ¹³ C ₆ , ¹⁵ N ₂]-L-Lysine
Buffer:	25 mM Tris-HCl, 100 mM glycine, pH 7.3
Storage:	Store at -80°C. Avoid repeated freeze-thaw cycles.
Stability:	Stable for 3 months from receipt of products under proper storage and handling conditions.
RefSeq:	NP_109591
RefSeq Size:	2678
RefSeq ORF:	1137
Synonyms:	EI; ELANH2; HEL-S-27; HEL57; LEI; M/NEI; MNEI; PI-2; PI2
Locus ID:	1992



[View online »](#)

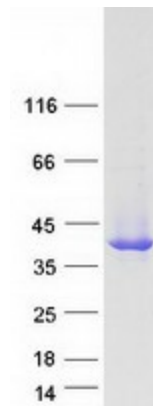
UniProt ID: [P30740](#), [V9HWH1](#)

Cytogenetics: 6p25.2

Summary: The protein encoded by this gene is a member of the serpin family of proteinase inhibitors. Members of this family maintain homeostasis by neutralizing overexpressed proteinase activity through their function as suicide substrates. This protein inhibits the neutrophil-derived proteinases neutrophil elastase, cathepsin G, and proteinase-3 and thus protects tissues from damage at inflammatory sites. Alternative splicing results in multiple transcript variants. [provided by RefSeq, Aug 2012]

Protein Families: Druggable Genome

Product images:



Coomassie blue staining of purified SERPINB1 protein (Cat# [TP302138]). The protein was produced from HEK293T cells transfected with SERPINB1 cDNA clone (Cat# [RC202138]) using MegaTran 2.0 (Cat# [TT210002]).