

Product datasheet for PH302126

UCH37 (UCHL5) (NM_015984) Human Mass Spec Standard

Product data:

Product Type:	Mass Spec Standards
Description:	UCHL5 MS Standard C13 and N15-labeled recombinant protein (NP_057068)
Species:	Human
Expression Host:	HEK293
Expression cDNA Clone or AA Sequence:	RC202126
Predicted MW:	37.4 kDa
Protein Sequence:	>RC202126 representing NM_015984 Red=Cloning site Green=Tags(s) MTGNAGEWCLMESDPGVFTELIKFGCRGAQVEE IWSLEPENFEK LKPVHGLIFLFWQPGEEPAGSVVQ DSRLDTIFFAKQVINNACATQAI VSVLLNCTHQDVHLGETLSEFKEFSQSFDAAMKGLALSNSDVIRQVH NSFARQQMFEFDTKTSAKEEDAFHFVSYVPVNGRLYELDGLREGPIDLGACNQDDWISAVRPVIEKRIQK YSEGEIRFNLMIAIVSDRKMIEYEQKIAELQRQLAE EEPMDTDQGN SMLSAIQSEVAKNQMLIEEEVQK LKR YK IENIRRKHNYLPFIMELLKTLAEHQQLIPLVEKAKEKQNAKKAQETK TRTRPLEQKLI SEEDLAANDILDYKDDDDKV
Tag:	C-Myc/DDK
Purity:	> 80% as determined by SDS-PAGE and Coomassie blue staining
Concentration:	>0.05 µg/µL as determined by microplate BCA method
Labeling Method:	Labeled with [U- ¹³ C ₆ , ¹⁵ N ₄]-L-Arginine and [U- ¹³ C ₆ , ¹⁵ N ₂]-L-Lysine
Buffer:	25 mM Tris-HCl, 100 mM glycine, pH 7.3
Storage:	Store at -80°C. Avoid repeated freeze-thaw cycles.
Stability:	Stable for 3 months from receipt of products under proper storage and handling conditions.
RefSeq:	<u>NP_057068</u>
RefSeq Size:	1728
RefSeq ORF:	987
Synonyms:	CGI-70; INO80R; UCH-L5; UCH37
Locus ID:	51377



[View online »](#)

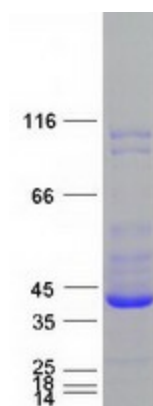
UniProt ID: [Q9Y5K5](#)

Cytogenetics: 1q31.2

Summary: Protease that specifically cleaves 'Lys-48'-linked polyubiquitin chains. Deubiquitinating enzyme associated with the 19S regulatory subunit of the 26S proteasome. Putative regulatory component of the INO80 complex; however is inactive in the INO80 complex and is activated by a transient interaction of the INO80 complex with the proteasome via ADRM1. [UniProtKB/Swiss-Prot Function]

Protein Families: Druggable Genome, Protease

Product images:



Coomassie blue staining of purified UCHL5 protein (Cat# [TP302126]). The protein was produced from HEK293T cells transfected with UCHL5 cDNA clone (Cat# [RC202126]) using MegaTran 2.0 (Cat# [TT210002]).