

Product datasheet for PH302122

SEC11C (NM_033280) Human Mass Spec Standard

Product data:

Product Type:	Mass Spec Standards
Description:	SEC11C MS Standard C13 and N15-labeled recombinant protein (NP_150596)
Species:	Human
Expression Host:	HEK293
Expression cDNA Clone or AA Sequence:	RC202122
Predicted MW:	21.5 kDa
Protein Sequence:	>RC202122 protein sequence Red=Cloning site Green=Tags(s) MVRAGAVGAHLPASGLDIFGDLKMKRQLYYQVLNFAMIVSSALMIWKGLIVLTGSESPVVVLSGSME PAFHARGDLLFLTNFREDPIRAGEIVVFKEGRDIPVHRVIKVHEKDNGDIKFLTKGDNNEVDDRGLYKE GQNWLEKKDVVGRARGFLPYVGMVTIIMNDYPKFKYALLAVMGAYVLLKRES TRTRPLEQKLISEEDLAANDILDYKDDDDKV
Tag:	C-Myc/DDK
Purity:	> 80% as determined by SDS-PAGE and Coomassie blue staining
Concentration:	>0.05 µg/µL as determined by microplate BCA method
Labeling Method:	Labeled with [U- 13C6, 15N4]-L-Arginine and [U- 13C6, 15N2]-L-Lysine
Buffer:	25 mM Tris-HCl, 100 mM glycine, pH 7.3
Storage:	Store at -80°C. Avoid repeated freeze-thaw cycles.
Stability:	Stable for 3 months from receipt of products under proper storage and handling conditions.
RefSeq:	NP_150596
RefSeq Size:	793
RefSeq ORF:	576
Synonyms:	SEC11L3; SPC21; SPCS4C
Locus ID:	90701
UniProt ID:	Q9BY50



[View online »](#)

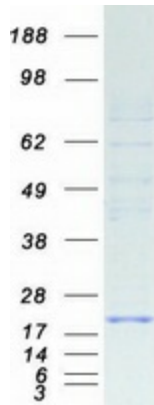
Cytogenetics: 18q21.32

Summary: Component of the microsomal signal peptidase complex which removes signal peptides from nascent proteins as they are translocated into the lumen of the endoplasmic reticulum.
[UniProtKB/Swiss-Prot Function]

Protein Families: Protease, Transmembrane

Protein Pathways: Protein export

Product images:



Coomassie blue staining of purified SEC11C protein (Cat# [TP302122]). The protein was produced from HEK293T cells transfected with SEC11C cDNA clone (Cat# [RC202122]) using MegaTran 2.0 (Cat# [TT210002]).