

## Product datasheet for PH302117

### S100A3 (NM\_002960) Human Mass Spec Standard

#### Product data:

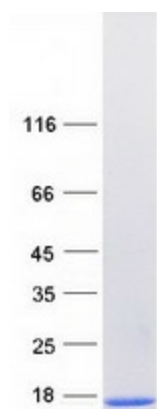
Product Type:	Mass Spec Standards
Description:	S100A3 MS Standard C13 and N15-labeled recombinant protein (NP_002951)
Species:	Human
Expression Host:	HEK293
Expression cDNA Clone or AA Sequence:	RC202117
Predicted MW:	11.7 kDa
Protein Sequence:	>RC202117 protein sequence <b>Red</b> =Cloning site <b>Green</b> =Tags(s)  MARPLEQAVAAIVCTFQEYAGRCGDKYKLCQAELKELLQKELATWTPTEFRECNDYNKFMVSLDTNKDCEV DFVEYVRSACLCLYCHEYFKDCPSEPPCSQ  <b>TRTRPLEQKLISEEDLAANDILDYKDDDDKV</b>
Tag:	C-Myc/DDK
Purity:	> 80% as determined by SDS-PAGE and Coomassie blue staining
Concentration:	>0.05 µg/µL as determined by microplate BCA method
Labeling Method:	Labeled with [U- 13C6, 15N4]-L-Arginine and [U- 13C6, 15N2]-L-Lysine
Buffer:	25 mM Tris-HCl, 100 mM glycine, pH 7.3
Storage:	Store at -80°C. Avoid repeated freeze-thaw cycles.
Stability:	Stable for 3 months from receipt of products under proper storage and handling conditions.
RefSeq:	<a href="#">NP_002951</a>
RefSeq Size:	738
RefSeq ORF:	303
Synonyms:	S100E
Locus ID:	6274
UniProt ID:	<a href="#">P33764</a>
Cytogenetics:	1q21.3



[View online »](#)

**Summary:**

The protein encoded by this gene is a member of the S100 family of proteins containing 2 EF-hand calcium-binding motifs. S100 proteins are localized in the cytoplasm and/or nucleus of a wide range of cells, and involved in the regulation of a number of cellular processes such as cell cycle progression and differentiation. S100 genes include at least 13 members which are located as a cluster on chromosome 1q21. This protein has the highest content of cysteines of all S100 proteins, has a high affinity for Zinc, and is highly expressed in human hair cuticle. The precise function of this protein is unknown. [provided by RefSeq, Jul 2008]

**Product images:**

Coomassie blue staining of purified S100A3 protein (Cat# [TP302117]). The protein was produced from HEK293T cells transfected with S100A3 cDNA clone (Cat# [RC202117]) using MegaTran 2.0 (Cat# [TT210002]).