

## Product datasheet for PH302114

### ETHE1 (NM\_014297) Human Mass Spec Standard

#### Product data:

Product Type:	Mass Spec Standards
Description:	ETHE1 MS Standard C13 and N15-labeled recombinant protein (NP_055112)
Species:	Human
Expression Host:	HEK293
Expression cDNA Clone or AA Sequence:	RC202114
Predicted MW:	27.9 kDa
Protein Sequence:	>RC202114 protein sequence Red=Cloning site Green=Tags(s)  MAEAVLRVARRQLSQRGGSGAPIILLRQMFEPVSCFTFTYLLGDRESREAVLIDPVLETAPRDAQLIKELGL RLLYAVNTHCHADHITGSGLLRSLLPQCQSVISRLSGAQADLHIEDGDSIRFGRFALETRASPGHTPGCV TFVLNDHSMFTGDALLIRGCGRTDFQQGCAKTLYHSVHEKIFTLPGDCLIYPAHDYHGFTVSTVEEERT LNPRLTLSCEEFVKIMGNLNLPKPQQIDFAVPANMRCGVQTPTA  TRTRPLEQKLI SEEDLAANDILDYKDDDDKV
Tag:	C-Myc/DDK
Purity:	> 80% as determined by SDS-PAGE and Coomassie blue staining
Concentration:	>0.05 µg/µL as determined by microplate BCA method
Labeling Method:	Labeled with [U- <sup>13</sup> C <sub>6</sub> , <sup>15</sup> N <sub>4</sub> ]-L-Arginine and [U- <sup>13</sup> C <sub>6</sub> , <sup>15</sup> N <sub>2</sub> ]-L-Lysine
Buffer:	25 mM Tris-HCl, 100 mM glycine, pH 7.3
Storage:	Store at -80°C. Avoid repeated freeze-thaw cycles.
Stability:	Stable for 3 months from receipt of products under proper storage and handling conditions.
RefSeq:	<a href="#">NP_055112</a>
RefSeq Size:	978
RefSeq ORF:	762
Synonyms:	HSCO; YF13H12
Locus ID:	23474
UniProt ID:	<a href="#">O95571</a> , <a href="#">A0A0S2Z5B3</a>

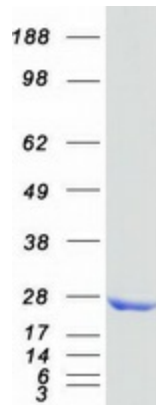


[View online »](#)

Cytogenetics: 19q13.31

**Summary:** This gene encodes a member of the metallo beta-lactamase family of iron-containing proteins involved in the mitochondrial sulfide oxidation pathway. The encoded protein catalyzes the oxidation of a persulfide substrate to sulfite. Certain mutations in this gene cause ethylmalonic encephalopathy, an infantile metabolic disorder affecting the brain, gastrointestinal tract and peripheral vessels. Alternative splicing results in multiple transcript variants encoding different isoforms. [provided by RefSeq, Mar 2016]

**Product images:**



Coomassie blue staining of purified ETHE1 protein (Cat# [TP302114]). The protein was produced from HEK293T cells transfected with ETHE1 cDNA clone (Cat# [RC202114]) using MegaTran 2.0 (Cat# [TT210002]).