

## Product datasheet for PH302113

### SLU7 (NM\_006425) Human Mass Spec Standard

#### Product data:

Product Type:	Mass Spec Standards
Description:	SLU7 MS Standard C13 and N15-labeled recombinant protein (NP_006416)
Species:	Human
Expression Host:	HEK293
Expression cDNA Clone or AA Sequence:	RC202113
Predicted MW:	68.3 kDa
Protein Sequence:	>RC202113 protein sequence Red=Cloning site Green=Tags(s)

MSATVVDAVNAAPLSGSKEMSLEEPKMTREDWRKKKELEEQRKLGNAPEVDEEGKDINPHIPQYISSV  
PWYIDPSKRPTLKHQRPQPEKQKQFSSSGEWYKRGVKENSVITKYRKGACENCGAMTHKKKDCFERPRRV  
GAKFTGTNIAPDEHVQPQLMFDYDGKRDRWNGYNPEEHMKIVEEYAKVDLAKRTLKAQKLQEELASGKLV  
EQANSPKHQWGEENSPQTEKDHNSEDEDEDKYADDIDMPGQNFDSKRRI TVRNLR IREDIAKYLRNLDP  
NSAYYDPKTRAMRENPYANAGKNPDEVSYAGDNFVRYTGDTISMAQTQLFAWEAYDKGSEVHLQADPTKL  
ELLYKSFVKKEDFKEQQKESILEKYGGQEHLDAPPAELLLAQTEDYVEYSRHGTVIKQGERAVACSKYE  
EDVKIHNHTHIWGSYWKEGRWGYKCCHSFFKYSYCTGEAGKEIVNSEECIINEITGEESVKKPQTLMELH  
QEKLKEEKKKKKKKKKHRKSSSDSDEEKKHEKLLKALNAEEARLLHVKETMQIDERKRPYNSMYETRE  
PTEEMEAYRMKRQRPPDPMSFLGQ

TRTRPLEQKLI SEEDLAANDILDYKDDDDKV

Tag:	C-Myc/DDK
Purity:	> 80% as determined by SDS-PAGE and Coomassie blue staining
Concentration:	>0.05 µg/µL as determined by microplate BCA method
Labeling Method:	Labeled with [U- 13C6, 15N4]-L-Arginine and [U- 13C6, 15N2]-L-Lysine
Buffer:	25 mM Tris-HCl, 100 mM glycine, pH 7.3
Storage:	Store at -80°C. Avoid repeated freeze-thaw cycles.
Stability:	Stable for 3 months from receipt of products under proper storage and handling conditions.
RefSeq:	<a href="#">NP_006416</a>
RefSeq Size:	3570
RefSeq ORF:	1758



[View online »](#)

**Synonyms:** 9G8; hSlu7

**Locus ID:** 10569

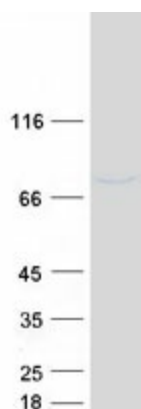
**UniProt ID:** [O95391](#)

**Cytogenetics:** 5q33.3

**Summary:** Pre-mRNA splicing occurs in two sequential transesterification steps. The protein encoded by this gene is a splicing factor that has been found to be essential during the second catalytic step in the pre-mRNA splicing process. It associates with the spliceosome and contains a zinc knuckle motif that is found in other splicing factors and is involved in protein-nucleic acid and protein-protein interactions. [provided by RefSeq, Jul 2008]

**Protein Pathways:** Spliceosome

### Product images:



Coomassie blue staining of purified SLU7 protein (Cat# [TP302113]). The protein was produced from HEK293T cells transfected with SLU7 cDNA clone (Cat# [RC202113]) using MegaTran 2.0 (Cat# [TT210002]).