

Product datasheet for PH302085

PAI1 (SERPINE1) (NM_000602) Human Mass Spec Standard

Product data:

Product Type:	Mass Spec Standards
Description:	SERPINE1 MS Standard C13 and N15-labeled recombinant protein (NP_000593)
Species:	Human
Expression Host:	HEK293
Expression cDNA Clone or AA Sequence:	RC202085
Predicted MW:	45.1 kDa
Protein Sequence:	>RC202085 protein sequence Red=Cloning site Green=Tags(s)

MQMSPAL TCLVLGLALVFGEGSAVHPPSYVAHLASDFGVRVFQQVAQASKDRNVVFSFYGVASVLAAMLQ
LTTGGETQQQIQAAAMGFKIDDKGMAPALRHL YKELMGPWNKDEISTTDAIFVQRDLKLVQGFMPHFRLF
RSTVKQVDFSEVERARFIINDWVKTHTKGMISNLLGKGAVDQLTRLVLVNALYFNGQWKTPFPDSSTHRR
LFHKSDGSTVSPMMAQTNKFNYTEFTTPDGHYYDILELPYHGDLSMFIAAPYEKEVPLSALTNILSAQ
LISHWKGNMTRLPRLLVLPKFSLETEVDLRKPLENLGMTDMFRQFQADFTSLSDQEPLHVAQALQVKVIE
VNESGTVASSSTAVIVSARMAPEEIIIMDRPFLFVVRHNPTGTVLFMGQVMPEP

TRTRPLEQKLI SEEDLAANDILDYKDDDDKV

Tag:	C-Myc/DDK
Purity:	> 80% as determined by SDS-PAGE and Coomassie blue staining
Concentration:	>0.05 µg/µL as determined by microplate BCA method
Labeling Method:	Labeled with [U- ¹³ C ₆ , ¹⁵ N ₄]-L-Arginine and [U- ¹³ C ₆ , ¹⁵ N ₂]-L-Lysine
Buffer:	25 mM Tris-HCl, 100 mM glycine, pH 7.3
Storage:	Store at -80°C. Avoid repeated freeze-thaw cycles.
Stability:	Stable for 3 months from receipt of products under proper storage and handling conditions.
RefSeq:	NP_000593
RefSeq Size:	3207
RefSeq ORF:	1206
Synonyms:	PAI; PAI-1; PAI1; PLANH1
Locus ID:	5054



[View online »](#)

UniProt ID: [P05121](#), [A0A024QYT5](#)

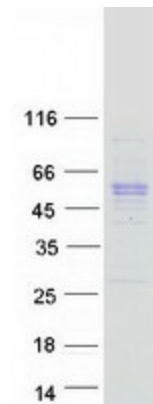
Cytogenetics: 7q22.1

Summary: This gene encodes a member of the serine proteinase inhibitor (serpin) superfamily. This member is the principal inhibitor of tissue plasminogen activator (tPA) and urokinase (uPA), and hence is an inhibitor of fibrinolysis. The protein also functions as a component of innate antiviral immunity. Defects in this gene are the cause of plasminogen activator inhibitor-1 deficiency (PAI-1 deficiency), and high concentrations of the gene product are associated with thrombophilia. [provided by RefSeq, Aug 2020]

Protein Families: Druggable Genome, Secreted Protein

Protein Pathways: Complement and coagulation cascades, p53 signaling pathway

Product images:



Coomassie blue staining of purified SERPINE1 protein (Cat# [TP302085]). The protein was produced from HEK293T cells transfected with SERPINE1 cDNA clone (Cat# [RC202085]) using MegaTran 2.0 (Cat# [TT210002]).