

Product datasheet for PH302082

alpha 1 Antitrypsin (SERPINA1) (NM_000295) Human Mass Spec Standard

Product data:

Product Type:	Mass Spec Standards
Description:	SERPINA1 MS Standard C13 and N15-labeled recombinant protein (NP_000286)
Species:	Human
Expression Host:	HEK293
Expression cDNA Clone or AA Sequence:	RC202082
Predicted MW:	46.7 kDa
Protein Sequence:	>RC202082 protein sequence Red=Cloning site Green=Tags(s)
	MPSSVSWGILLLAGLCCCLVPVSLAEDPQGDAQAQKTDTSHHDDQDHPTFNKITPNLAEFASFLYRQLAHQSN STNIFFSPVSIATAFAMLSLGTKADTHDEILEGLNFNLTEIPEAQIHEGFQELLRTLNPDSQLQLTTGN GLFLSEGLKLVDFLEDVKLYHSEAFVNFVGDTEEAQQINDYVEKGTQGKIVDLVKELDRDVFALVN YIFFKGGWERPFVEKDTTEEDFHVQVTVKVPMMKRLGMFNIQHCKKLSWVLLMKYLGNATAIFFLPD EGKLQHLENELTHDIITKFLNEDRRSASLHLPKLSITGTDLKSVLGQLGITKVFSGADLSGVTEEAP LKLSKAVHKAVLTIDEKGTAAAGAMFLEAIPMSIPPEVKFNKPFVFLMIDQNTKSPLFMGKVVNPTQK
	TRTRPLEQKLISEEDLAANDILDYKDDDDKV
Tag:	C-Myc/DDK
Purity:	> 80% as determined by SDS-PAGE and Coomassie blue staining
Concentration:	>0.05 µg/µL as determined by microplate BCA method
Labeling Method:	Labeled with [U- ¹³ C ₆ , ¹⁵ N ₄]-L-Arginine and [U- ¹³ C ₆ , ¹⁵ N ₂]-L-Lysine
Buffer:	25 mM Tris-HCl, 100 mM glycine, pH 7.3
Storage:	Store at -80°C. Avoid repeated freeze-thaw cycles.
Stability:	Stable for 3 months from receipt of products under proper storage and handling conditions.
RefSeq:	<u>NP_000286</u>
RefSeq Size:	3220
RefSeq ORF:	1254
Synonyms:	A1A; A1AT; AAT; alpha1AT; nNIF; PI; PI1; PRO2275
Locus ID:	5265



[View online »](#)

UniProt ID: [P01009](#), [E9KL23](#)

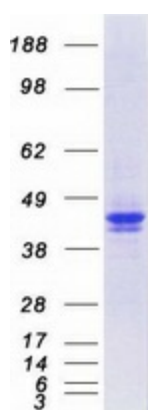
Cytogenetics: 14q32.13

Summary: The protein encoded by this gene is a serine protease inhibitor belonging to the serpin superfamily whose targets include elastase, plasmin, thrombin, trypsin, chymotrypsin, and plasminogen activator. This protein is produced in the liver, the bone marrow, by lymphocytic and monocytic cells in lymphoid tissue, and by the Paneth cells of the gut. Defects in this gene are associated with chronic obstructive pulmonary disease, emphysema, and chronic liver disease. Several transcript variants encoding the same protein have been found for this gene. [provided by RefSeq, Aug 2020]

Protein Families: Druggable Genome, ES Cell Differentiation/IPS, Secreted Protein

Protein Pathways: Complement and coagulation cascades

Product images:



Coomassie blue staining of purified SERPINA1 protein (Cat# [TP302082]). The protein was produced from HEK293T cells transfected with SERPINA1 cDNA clone (Cat# [RC202082]) using MegaTran 2.0 (Cat# [TT210002]).