

Product datasheet for PH302079

IL1 beta (IL1B) (NM_000576) Human Mass Spec Standard

Product data:

Product Type:	Mass Spec Standards
Description:	IL1B MS Standard C13 and N15-labeled recombinant protein (NP_000567)
Species:	Human
Expression Host:	HEK293
Expression cDNA Clone or AA Sequence:	RC202079
Predicted MW:	30.7 kDa
Protein Sequence:	>RC202079 protein sequence Red=Cloning site Green=Tags(s) MAEVP ELASEMMAYYS GNEDDLFFEADGPKQMKCSFQDL DLCPLDGGIQLRISDHHYSKGRQAASVVVA MDKLRKMLVPCPQTFQENDLSTFFPFI FEEEP IFFDTWDNEAYVHDAPVRS LNCTLRDSQQKSLVMSGPY ELKALHLQGQDMEQQVVF SMSFVQGEESNDKIPVALGLKEKNLYLSCVLKDDKPTLQLESVDPKNYPKKK MEKRFVFNKIEINNKL E FESAQFPN WYIST SQAENMPVFLGGTKGGQDITDFTMQFVSS TRTRPLEQKLI SEEDLAANDILDYKDDDDKV
Tag:	C-Myc/DDK
Purity:	> 80% as determined by SDS-PAGE and Coomassie blue staining
Concentration:	>0.05 µg/µL as determined by microplate BCA method
Labeling Method:	Labeled with [U- ¹³ C ₆ , ¹⁵ N ₄]-L-Arginine and [U- ¹³ C ₆ , ¹⁵ N ₂]-L-Lysine
Buffer:	25 mM Tris-HCl, 100 mM glycine, pH 7.3
Storage:	Store at -80°C. Avoid repeated freeze-thaw cycles.
Stability:	Stable for 3 months from receipt of products under proper storage and handling conditions.
RefSeq:	NP_000567
RefSeq Size:	1498
RefSeq ORF:	807
Synonyms:	IL-1; IL1-BETA; IL1beta; IL1F2
Locus ID:	3553
UniProt ID:	P01584



[View online »](#)

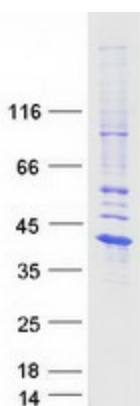
Cytogenetics: 2q14.1

Summary: The protein encoded by this gene is a member of the interleukin 1 cytokine family. This cytokine is produced by activated macrophages as a proprotein, which is proteolytically processed to its active form by caspase 1 (CASP1/ICE). This cytokine is an important mediator of the inflammatory response, and is involved in a variety of cellular activities, including cell proliferation, differentiation, and apoptosis. The induction of cyclooxygenase-2 (PTGS2/COX2) by this cytokine in the central nervous system (CNS) is found to contribute to inflammatory pain hypersensitivity. Similarly, IL-1B has been implicated in human osteoarthritis pathogenesis. Patients with severe Coronavirus Disease 2019 (COVID-19) present elevated levels of pro-inflammatory cytokines such as IL-1B in bronchial alveolar lavage fluid samples. The lung damage induced by the Severe acute respiratory syndrome coronavirus 2 (SARS-CoV-2) is to a large extent, a result of the inflammatory response promoted by cytokines such as IL-1B. This gene and eight other interleukin 1 family genes form a cytokine gene cluster on chromosome 2. [provided by RefSeq, Jul 2020]

Protein Families: Druggable Genome, Secreted Protein

Protein Pathways: Alzheimer's disease, Apoptosis, Cytokine-cytokine receptor interaction, Cytosolic DNA-sensing pathway, Graft-versus-host disease, Hematopoietic cell lineage, MAPK signaling pathway, NOD-like receptor signaling pathway, Prion diseases, Toll-like receptor signaling pathway, Type I diabetes mellitus

Product images:



Coomassie blue staining of purified IL1B protein (Cat# [TP302079]). The protein was produced from HEK293T cells transfected with IL1B cDNA clone (Cat# [RC202079]) using MegaTran 2.0 (Cat# [TT210002]).