

Product datasheet for PH302076

MLC1SA (MYL6B) (NM_002475) Human Mass Spec Standard

Product data:

Product Type:	Mass Spec Standards
Description:	MYL6B MS Standard C13 and N15-labeled recombinant protein (NP_002466)
Species:	Human
Expression Host:	HEK293
Expression cDNA Clone or AA Sequence:	RC202076
Predicted MW:	22.8 kDa
Protein Sequence:	>RC202076 protein sequence Red=Cloning site Green=Tags(s) MPPKKDVPVKKPAGPSISKPAAKPAAAGAPPAKTKAEPVAVPQAPQKTQEPPVDLSKVVIEFNKDQLEEFK EAFELFDRVGDGKILYSQCGDVMRALGQNPTNAEVLKVLGNPKSDELKSRRVDFETFLPMLQAVAKNRGQ GTYEDYLEGFRVFDKEGNGKVMGAELRHVLTTLGEKMTEEEVETVLAGHEDSNGCINYEAFKHLISV TRTRPLEQKLISEEDLAANDILDYKDDDDKV
Tag:	C-Myc/DDK
Purity:	> 80% as determined by SDS-PAGE and Coomassie blue staining
Concentration:	>0.05 µg/µL as determined by microplate BCA method
Labeling Method:	Labeled with [U- ¹³ C ₆ , ¹⁵ N ₄]-L-Arginine and [U- ¹³ C ₆ , ¹⁵ N ₂]-L-Lysine
Buffer:	25 mM Tris-HCl, 100 mM glycine, pH 7.3
Storage:	Store at -80°C. Avoid repeated freeze-thaw cycles.
Stability:	Stable for 3 months from receipt of products under proper storage and handling conditions.
RefSeq:	NP_002466
RefSeq Size:	1008
RefSeq ORF:	624
Synonyms:	MLC1SA
Locus ID:	140465
UniProt ID:	P14649 , A0A024RB31



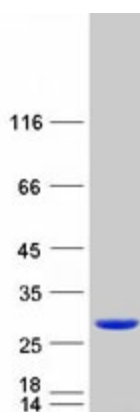
[View online »](#)

Cytogenetics: 12q13.2

Summary: Myosin is a hexameric ATPase cellular motor protein. It is composed of two heavy chains, two nonphosphorylatable alkali light chains, and two phosphorylatable regulatory light chains. This gene encodes a myosin alkali light chain expressed in both slow-twitch skeletal muscle and in nonmuscle tissue. Alternative splicing results in multiple transcript variants. [provided by RefSeq, Dec 2010]

Protein Pathways: Vascular smooth muscle contraction

Product images:



Coomassie blue staining of purified MYL6B protein (Cat# [TP302076]). The protein was produced from HEK293T cells transfected with MYL6B cDNA clone (Cat# [RC202076]) using MegaTran 2.0 (Cat# [TT210002]).