

Product datasheet for PH302068

SNAP25 (NM_003081) Human Mass Spec Standard

Product data:

Product Type:	Mass Spec Standards
Description:	SNAP25 MS Standard C13 and N15-labeled recombinant protein (NP_003072)
Species:	Human
Expression Host:	HEK293
Expression cDNA Clone or AA Sequence:	RC202068
Predicted MW:	23.3 kDa
Protein Sequence:	>RC202068 protein sequence Red=Cloning site Green=Tags(s) MAEDADMRNELEEMQRRADQLADESLESTRRLQLVEESKDAGIRTLVMLDEQGEQLDRVEEGMNHINQD MKEAEKNLKD LGKCCGLFICPCNKLKSSDAYKKA WGNQDGVVASQP PARVVDEREQMAISGGFIRRVTND ARENEMDENLEQVSGIIGNLRH MALDMGNEIDTQNRQIDRIMEKADSNKTRIDEANQRATKMLGSG TRTRPLEQKLI SEEDLAANDILDYKDDDDKV
Tag:	C-Myc/DDK
Purity:	> 80% as determined by SDS-PAGE and Coomassie blue staining
Concentration:	>0.05 µg/µL as determined by microplate BCA method
Labeling Method:	Labeled with [U- ¹³ C ₆ , ¹⁵ N ₄]-L-Arginine and [U- ¹³ C ₆ , ¹⁵ N ₂]-L-Lysine
Buffer:	25 mM Tris-HCl, 100 mM glycine, pH 7.3
Storage:	Store at -80°C. Avoid repeated freeze-thaw cycles.
Stability:	Stable for 3 months from receipt of products under proper storage and handling conditions.
RefSeq:	<u>NP_003072</u>
RefSeq Size:	2069
RefSeq ORF:	618
Synonyms:	bA416N4.2; CMS18; dj1068F16.2; RIC-4; RIC4; SEC9; SNAP; SNAP-25; SUP
Locus ID:	6616
UniProt ID:	<u>P60880</u>



[View online »](#)

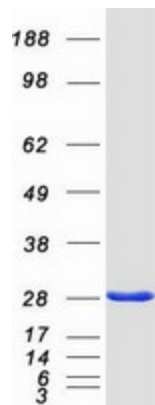
Cytogenetics: 20p12.2

Summary: Synaptic vesicle membrane docking and fusion is mediated by SNAREs (soluble N-ethylmaleimide-sensitive factor attachment protein receptors) located on the vesicle membrane (v-SNAREs) and the target membrane (t-SNAREs). The assembled v-SNARE/t-SNARE complex consists of a bundle of four helices, one of which is supplied by v-SNARE and the other three by t-SNARE. For t-SNAREs on the plasma membrane, the protein syntaxin supplies one helix and the protein encoded by this gene contributes the other two. Therefore, this gene product is a presynaptic plasma membrane protein involved in the regulation of neurotransmitter release. Two alternative transcript variants encoding different protein isoforms have been described for this gene. [provided by RefSeq, Jul 2008]

Protein Families: Druggable Genome

Protein Pathways: SNARE interactions in vesicular transport

Product images:



Coomassie blue staining of purified SNAP25 protein (Cat# [TP302068]). The protein was produced from HEK293T cells transfected with SNAP25 cDNA clone (Cat# [RC202068]) using MegaTran 2.0 (Cat# [TT210002]).