

Product datasheet for PH302060

STOM (NM_004099) Human Mass Spec Standard

Product data:

Product Type:	Mass Spec Standards
Description:	STOM MS Standard C13 and N15-labeled recombinant protein (NP_004090)
Species:	Human
Expression Host:	HEK293
Expression cDNA Clone or AA Sequence:	RC202060
Predicted MW:	31.8 kDa
Protein Sequence:	>RC202060 protein sequence Red=Cloning site Green=Tags(s)

MAEKRHTRDSEAQRLPDSFKDPSKGLGPCGWILVAFSFLFTVITFPISIWMCIKIKEYERAIIFRLGR
ILQGGAKGPGGLFFILPCTDSFIKVD MRTISFDIPPQEILTKDSVTISVDGVVYYRVQ NATLAVANITNAD
SATRLLAQTTLRNVLGTKNLSQILSDREEIAHNMQSTLDDATDAWGKVERVEIKDKLPVQLQRAMAAE
AEASREARAKVIAAEGEMNASRALKEASMVITEYPAALQLRYLQTLTTIAAEKNSTIVFPLPIDMLQGII
GAKHSHLG

TRTRPLEQKLI SEEDLAANDILDYKDDDDKV

Tag:	C-Myc/DDK
Purity:	> 80% as determined by SDS-PAGE and Coomassie blue staining
Concentration:	>0.05 µg/µL as determined by microplate BCA method
Labeling Method:	Labeled with [U- ¹³ C ₆ , ¹⁵ N ₄]-L-Arginine and [U- ¹³ C ₆ , ¹⁵ N ₂]-L-Lysine
Buffer:	25 mM Tris-HCl, 100 mM glycine, pH 7.3
Storage:	Store at -80°C. Avoid repeated freeze-thaw cycles.
Stability:	Stable for 3 months from receipt of products under proper storage and handling conditions.
RefSeq:	<u>NP_004090</u>
RefSeq Size:	3198
RefSeq ORF:	864
Synonyms:	BND7; EPB7; EPB72
Locus ID:	2040



[View online »](#)

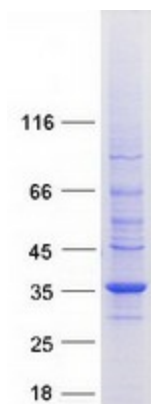
UniProt ID: [P27105](#), [A0A024R882](#)

Cytogenetics: 9q33.2

Summary: This gene encodes a member of a highly conserved family of integral membrane proteins. The encoded protein localizes to the cell membrane of red blood cells and other cell types, where it may regulate ion channels and transporters. Loss of localization of the encoded protein is associated with hereditary stomatocytosis, a form of hemolytic anemia. There is a pseudogene for this gene on chromosome 6. Alternative splicing results in multiple transcript variants. [provided by RefSeq, Jul 2012]

Protein Families: Transmembrane

Product images:



Coomassie blue staining of purified STOM protein (Cat# [TP302060]). The protein was produced from HEK293T cells transfected with STOM cDNA clone (Cat# [RC202060]) using MegaTran 2.0 (Cat# [TT210002]).