

Product datasheet for PH302021

LYPLA2 (NM_007260) Human Mass Spec Standard

Product data:

Product Type:	Mass Spec Standards
Description:	LYPLA2 MS Standard C13 and N15-labeled recombinant protein (NP_009191)
Species:	Human
Expression Host:	HEK293
Expression cDNA Clone or AA Sequence:	RC202021
Predicted MW:	24.7 kDa
Protein Sequence:	>RC202021 protein sequence Red=Cloning site Green=Tags(s) MCGNTMSVPLLTAATVSGAERETA AVIFLHGLGDTGHSWADALSTIRLPHVKYICPHAPRIPVTLNMKM VMPSWFDLMGLSPDAPEDEAGIKKAAENIKALIEHEMKNIGIPANRIVLGGFSQGGALSLYTALTCPHPLA GIVALSCWLPLHRAFPQAANGSAKDLAILQCHGELDPMVPRFGALTAEKLRVSVTPARVQFKTYPGVMH SSCPQEMAAVKEFLEKLLPPV TRTRPLEQKLI SEEDLAANDILDYKDDDDKV
Tag:	C-Myc/DDK
Purity:	> 80% as determined by SDS-PAGE and Coomassie blue staining
Concentration:	>0.05 µg/µL as determined by microplate BCA method
Labeling Method:	Labeled with [U- ¹³ C ₆ , ¹⁵ N ₄]-L-Arginine and [U- ¹³ C ₆ , ¹⁵ N ₂]-L-Lysine
Buffer:	25 mM Tris-HCl, 100 mM glycine, pH 7.3
Storage:	Store at -80°C. Avoid repeated freeze-thaw cycles.
Stability:	Stable for 3 months from receipt of products under proper storage and handling conditions.
RefSeq:	NP_009191
RefSeq Size:	1648
RefSeq ORF:	693
Synonyms:	APT-2; APT2; DJ886K2.4
Locus ID:	11313
UniProt ID:	O95372 , A0A140VJC9



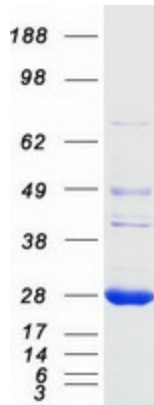
[View online »](#)

Cytogenetics: 1p36.11

Summary: Lysophospholipases are enzymes that act on biological membranes to regulate the multifunctional lysophospholipids. There are alternatively spliced transcript variants described for this gene but the full length nature is not known yet. [provided by RefSeq, Jul 2008]

Protein Pathways: Glycerophospholipid metabolism

Product images:



Coomassie blue staining of purified LYPLA2 protein (Cat# [TP302021]). The protein was produced from HEK293T cells transfected with LYPLA2 cDNA clone (Cat# [RC202021]) using MegaTran 2.0 (Cat# [TT210002]).